

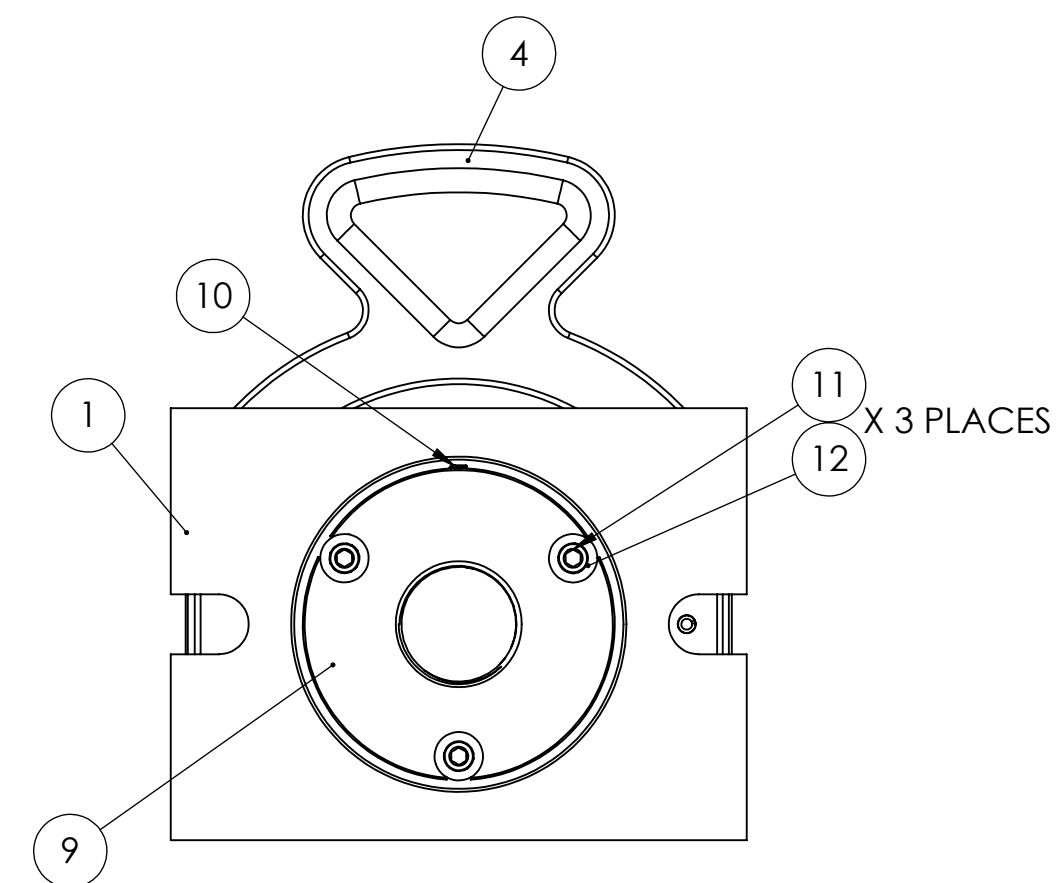
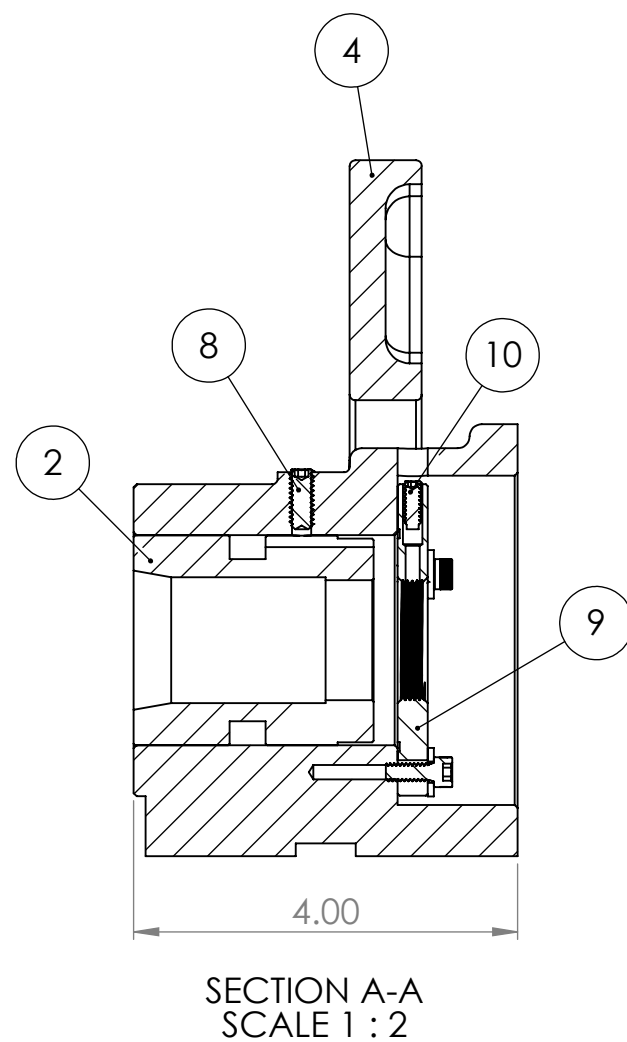
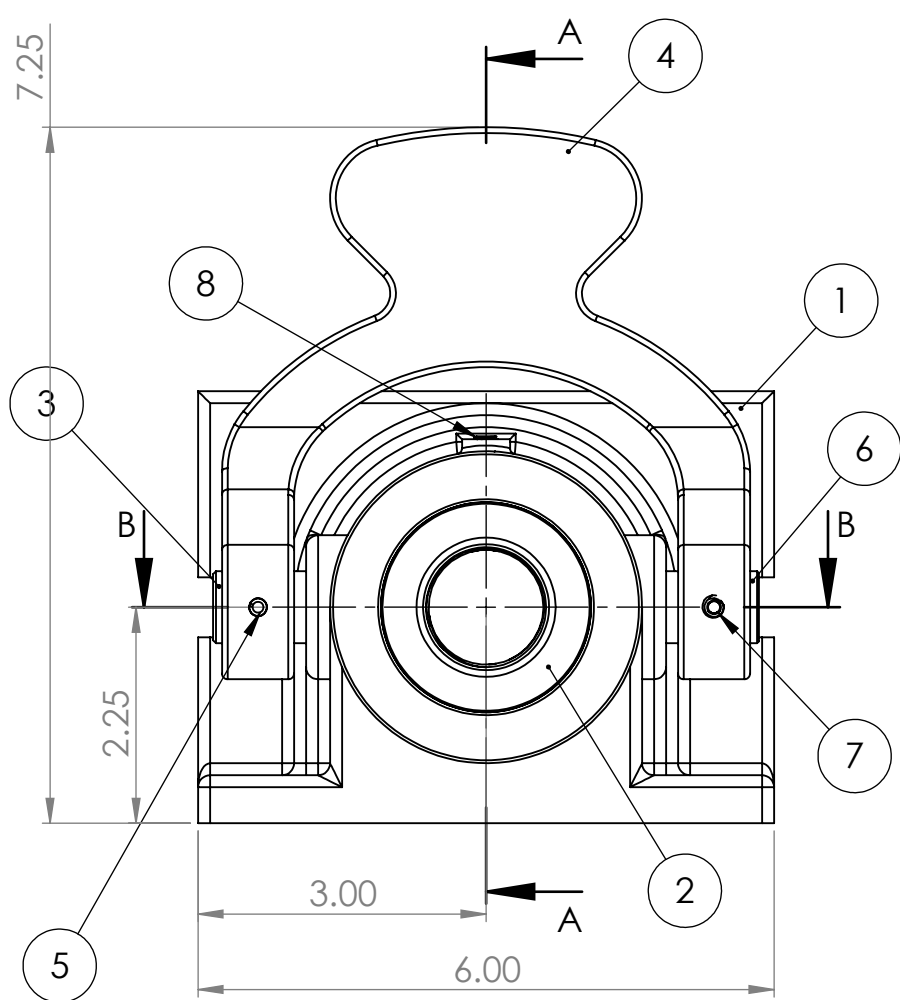
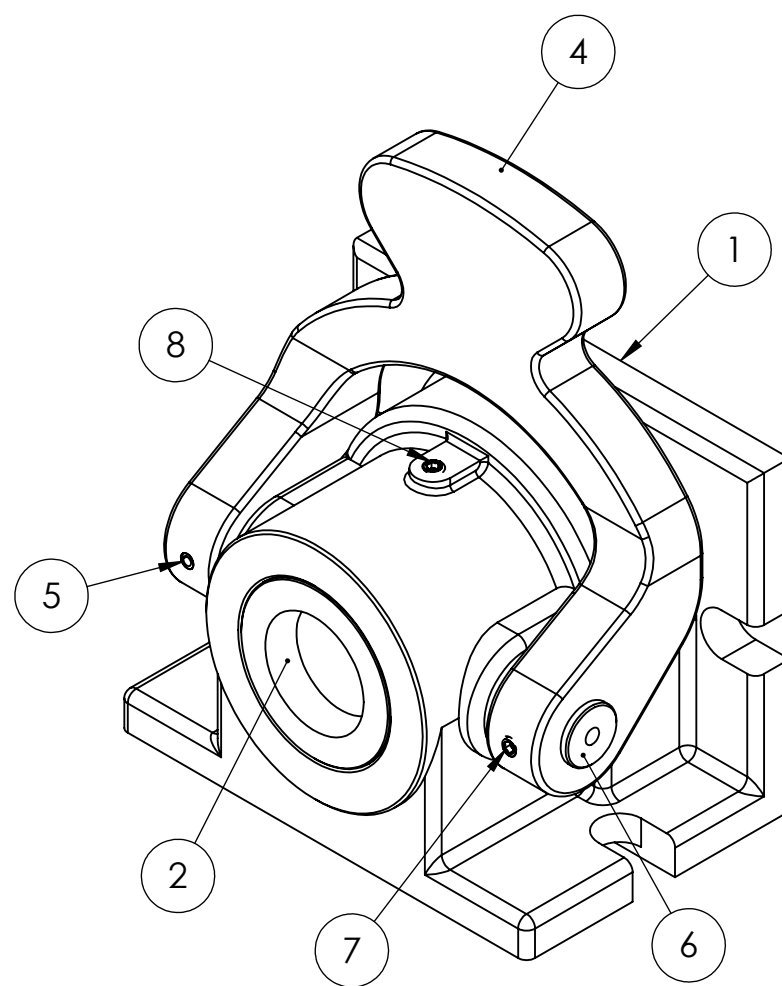
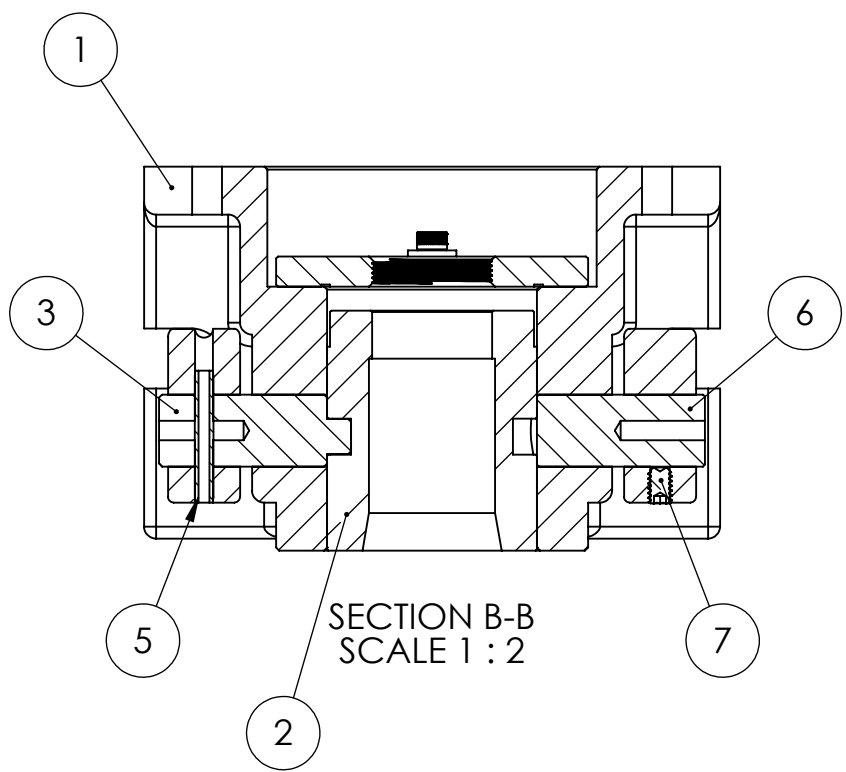
4

3

2

1

ITEM NO.	PART NUMBER	DESCRIPTION	QTY.
1	050-006	10C BODY	1
2	701-006	SPINDLE FOR 10C	1
3	129-002	COLLET LOCK CAM FOR 10C	1
4	454-003	LEVER HANDLE FOR 10C	1
5	ROLA018022	3/16 X 1-3/8 ROLL PIN	1
6	129-003	PIN FOR 10C	1
7	SSKA025006	1/4-20 X 3/8 SOC SET KNURL PT.	1
8	SSKA025008	1/4-20 X 5/8 SOC SET KNURL PT.	1
9	123-001	THREADED RING FOR 10C AND AO5C	1
10	SSHA010006	10-24 X 3/8 SOC SET 1/2 DOG	1
11	SHCA010008	10-24 X 1/2 SHCS	3
12	MSWZ010	#10 M.S. F/W Z	3



PROPRIETARY AND CONFIDENTIAL
 THE INFORMATION CONTAINED IN THIS DRAWING IS THE SOLE PROPERTY OF <INSERT COMPANY NAME HERE>. ANY REPRODUCTION IN PART OR AS A WHOLE WITHOUT THE WRITTEN PERMISSION OF <INSERT COMPANY NAME HERE> IS PROHIBITED.

UNLESS OTHERWISE SPECIFIED:		NAME	DATE	KALAMAZOO INDUSTRIES, INC.
DIMENSIONS ARE IN INCHES		DRAWN		
TOLERANCES:		CHECKED		TITLE:
FRACTIONAL ±		ENG APPR.		10C COLLET FIXTURE
ANGULAR: MACH ± BEND ±		MFG APPR.		SIZE DWG. NO.
TWO PLACE DECIMAL ±		Q.A.		C 10C
THREE PLACE DECIMAL ±		COMMENTS:		REV
INTERPRET GEOMETRIC TOLERANCING PER:				SCALE: 1:1 WEIGHT:
MATERIAL				SHEET 1 OF 1
FINISH				
NEXT ASSY	USED ON			
APPLICATION				
DO NOT SCALE DRAWING				

4

3

2

1