



DS12 Series Belt Sanders Instruction Manual

***Covers DS12 Bench Top Disc Sander & DS12V Floor
Model With Dust Collector***

www.kalamazooind.com

Kalamazoo Industries, Inc.
6856 East K Avenue
Kalamazoo, MI 49048
Phone 269-382-2050

GENERAL POWER TOOL SAFETY WARNINGS



WARNING: TO REDUCE THE RISK OF FIRE OR SHOCK HAZARD, DO NOT EXPOSE THIS EQUIPMENT TO RAIN, LIQUID, OR MOISTURE.

PRECAUTIONS

- Always wear safety glasses when operating power tools.
- Keep work area clean and well lit.
- Do not operate power tools in explosive atmospheres, such as the presence of flammable liquids, gases or dust.
- Keep children and bystanders away while operating a power tool.
- Keep long hair tied back or covered and never wear loose fitting clothing near a running machine.
- Additional precautions may be necessary when grinding materials that are flammable or have other hazardous properties. Consult manufacturer of materials for safe grinding and handling.

OPERATING INSTRUCTIONS

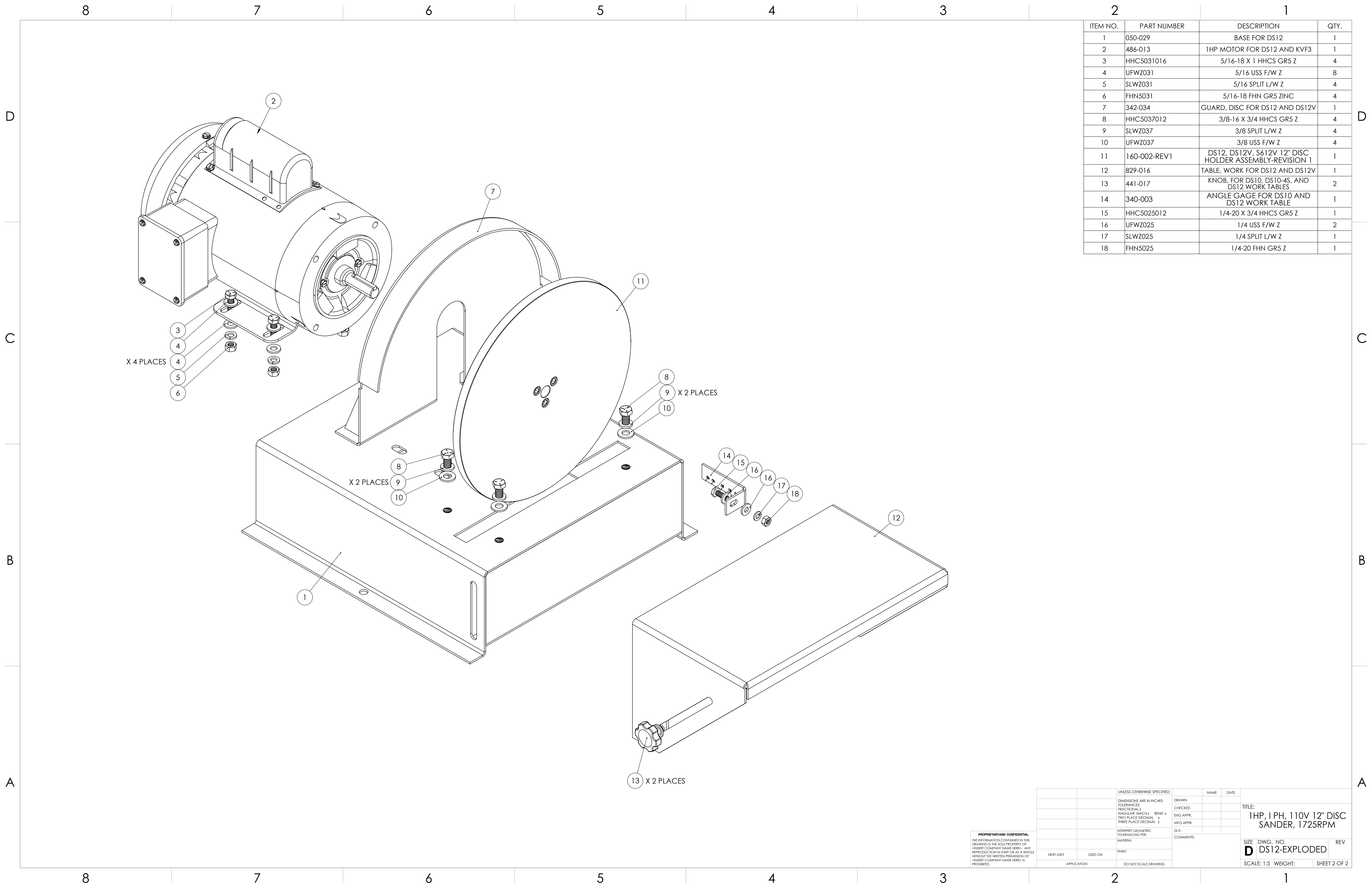
- Disconnect power before making any adjustments
- Disc rotation is counterclockwise.
- Table Adjustment — Loosen the table locking knobs (13, 25), set the worktable (12, 24) to the desired angle, then tighten the locking knobs (13, 25). *Table tilts from 90° to 45° downward.*
- Examine the abrasive disc carefully before use. Never use an abrasive belt with a nicked or cut edge, crease, or handling damage.
- If you are using a dust collector, bin should be emptied, and the filter should be changed frequently during use to maintain efficiency and prevent buildup of combustible materials.

WARRANTY: All products are guaranteed for a period of one year to the original purchaser, against defects in material workmanship under normal use. Exclusions may apply.

RETURN POLICY: Authorization must be obtained BEFORE returning merchandise. Contact our customer service department at 269-382-2050 for a return authorization number. Include with your return a copy of your invoice or packing slip. Materials must be sent back prepaid unless otherwise indicated. All returns will be subject to a 10% restocking charge. No returns will be accepted after one year of the invoice date.

BELT SANDER SAFETY:

- 1) Read the operating instructions before running machine.
- 2) Always wear safety glasses or a full-face shield for protection.
- 3) Keep hands clear of the sanding area.
- 4) Never wear gloves or loose-fitting clothing when operating this machine.
- 5) Always keep hair tied back or covered.
- 6) Let machine rotation come to a full stop before changing belt.
- 7) Keep Safety guards in place. Do not alter guards or machine in any way. Any alterations to guards or machine could cause serious injury.
- 8) All belt sanders should be operated in a well-ventilated area. The dust created when some materials are sanded can be harmful. Dust masks are recommended as practical means of minimizing dust inhalation. Fumes from other sources can also cause fires when in contact with sanding sparks.
- 9) Sparks created by sanding should be directed downward and away from the face and body. Do not grind near flammable material.
- 10) Electric sanding machines are not intended for use in or near water. This includes an operator standing on a wet floor or working around containers of water or other conductive liquids.



ITEM NO.	PART NUMBER	DESCRIPTION	QTY.
1	050-029	BASE FOR DS12	1
2	486-013	1HP MOTOR FOR DS12 AND KVF3	1
3	HHC5031016	5/16-18 X 1 HHCS GR5 Z	4
4	UFWZ031	5/16 USS F/W Z	8
5	SLWZ031	5/16 SPLIT L/W Z	4
6	FHN5031	5/16-18 FHN GR5 ZINC	4
7	342-034	GUARD, DISC FOR DS12 AND DS12V	1
8	HHC5037012	3/8-16 X 3/4 HHCS GR5 Z	4
9	SLWZ037	3/8 SPLIT L/W Z	4
10	UFWZ037	3/8 USS F/W Z	4
11	160-002-REV1	DS12, DS12V, S612V 12" DISC HOLDER ASSEMBLY-REVISION 1	1
12	829-016	TABLE, WORK FOR DS12 AND DS12V	1
13	441-017	KNOB, FOR DS10, DS10-4S, AND DS12 WORK TABLES	2
14	340-003	ANGLE GAGE FOR DS10 AND DS12 WORK TABLE	1
15	HHC5025012	1/4-20 X 3/4 HHCS GR5 Z	1
16	UFWZ025	1/4 USS F/W Z	2
17	SLWZ025	1/4 SPLIT L/W Z	1
18	FHN5025	1/4-20 FHN GR5 Z	1

PROPRIETARY AND CONFIDENTIAL
 THE INFORMATION CONTAINED IN THIS DRAWING IS THE SOLE PROPERTY OF
 ©BSEBT COMPANY NAME HERE. ANY
 REPRODUCTION IN PART OR AS A WHOLE
 WITHOUT THE WRITTEN PERMISSION OF
 ©BSEBT COMPANY NAME HERE IS
 PROHIBITED.

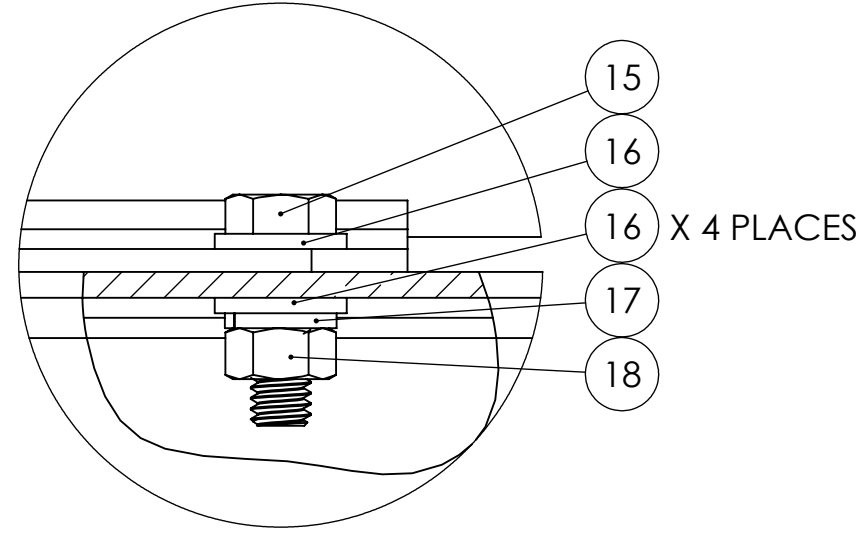
UNLESS OTHERWISE SPECIFIED:		NAME	DATE
DIMENSIONS ARE IN INCHES			
TOLERANCES:			
FRACTIONAL ±	DRAWN		
ANGULAR ± MACH ± BEND ±	CHECKED		
TWO PLACE DECIMAL ±	ENG APPR.		
THREE PLACE DECIMAL ±	MFG APPR.		
	Q.A.		
INTERPRET GEOMETRIC TOLERANCING PER:	COMMENTS:		
MATERIAL			
FINISH			
NEXT ASSY	USED ON		
APPLICATION	DO NOT SCALE DRAWING		

TITLE:
1HP, 1 PH, 110V 12" DISC SANDER, 1725RPM

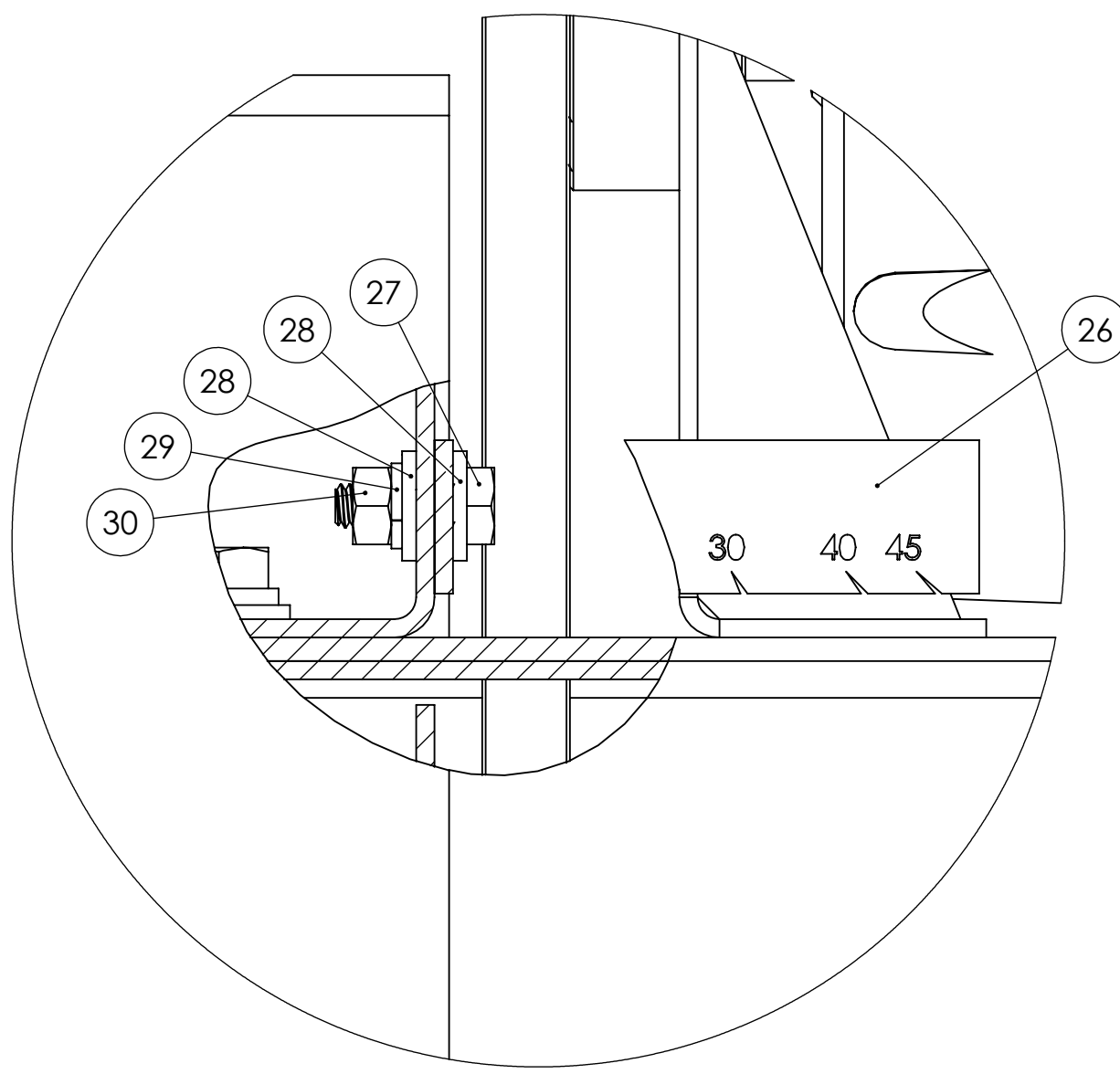
SIZE DWG. NO. REV
D DS12-EXPLODED

SCALE: 1:5 WEIGHT: SHEET 2 OF 2

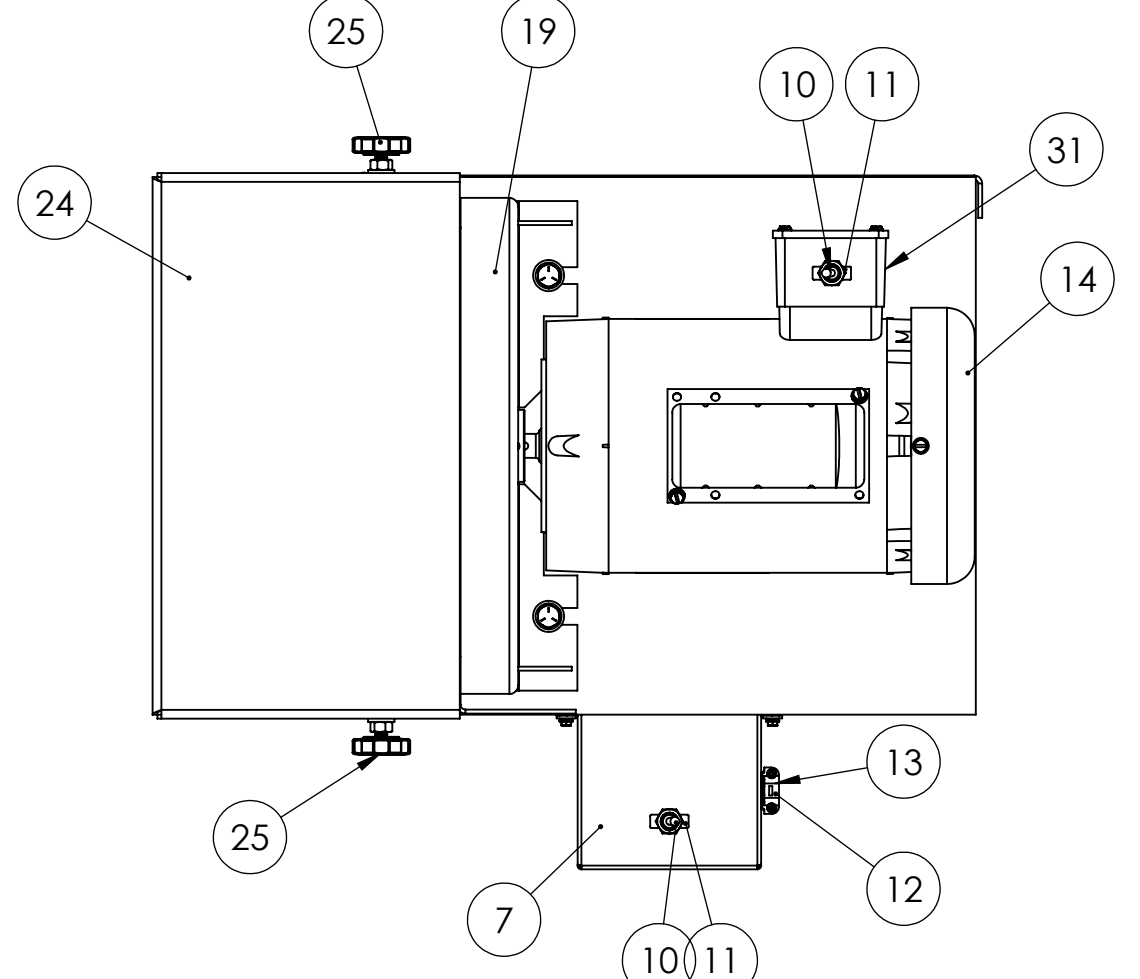
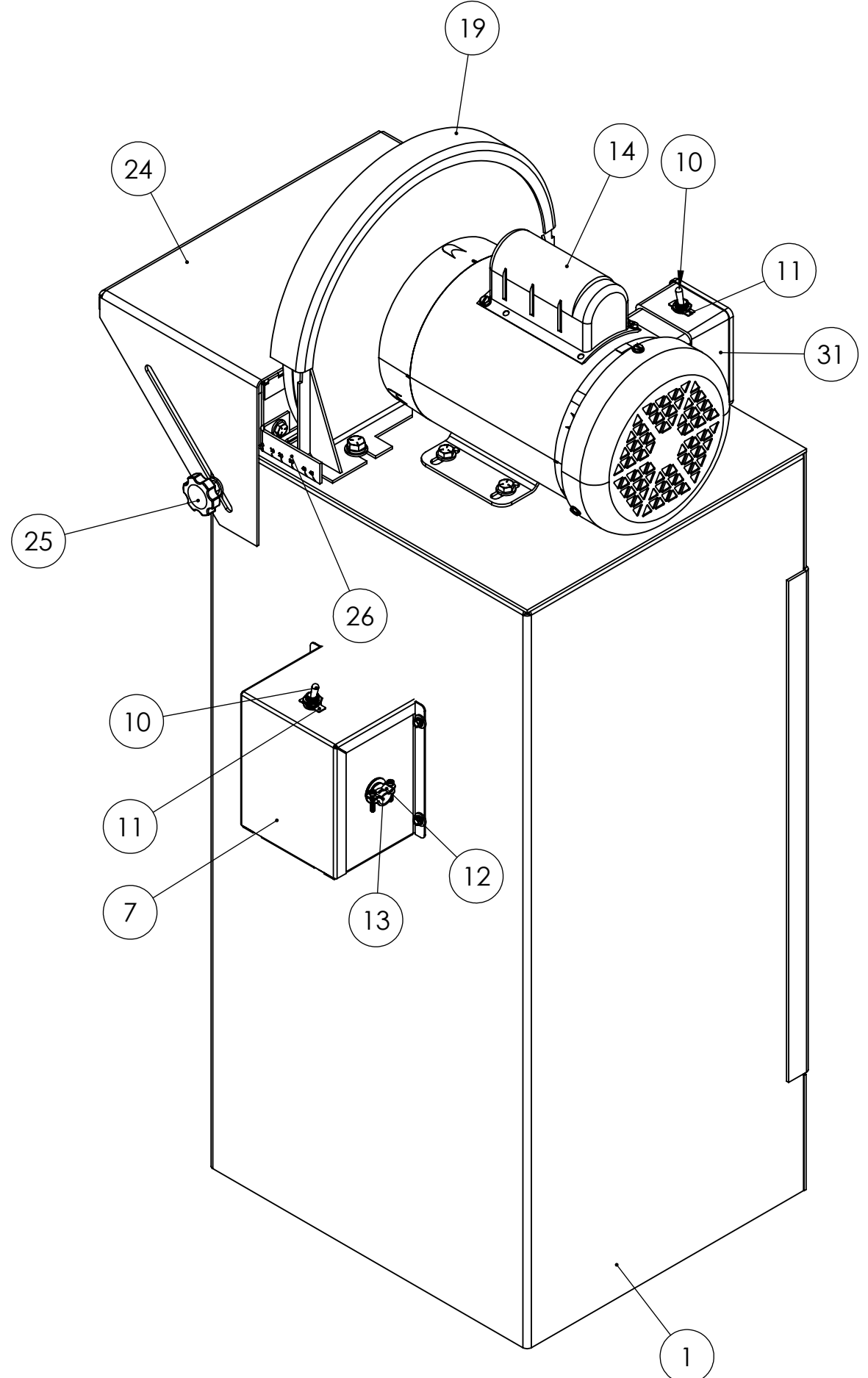
ITEM NO.	PART NUMBER	DESCRIPTION	QTY.
1	050-023	BASE, VACUUM FOR DS12V	1
2	486-005	VACUUM MOTOR FOR DCV-4	1
3	HHMZ010008	10-24 X 1/2 HHMS Z	4
4	SLWZ010	#10 SPLIT L/W Z	8
5	MSWZ010	#10 M.S. F/W Z	8
6	120-001	CANISTER FOR KS390V, KS490V, DCV-4, DS12V	1
7	122-001	SWITCH COVER FOR DCV-4 AND DCV-10	1
8	HWTZ008008	#8 X 1/2 HWH TEKS Z	4
9	5X878	CLOTH BAG FOR DCV-4 DUST COLLECTOR	1
10	710-007	ON/OFF TOGGLE SWITCH FOR SMALL SANDERS AND GRINDERS 118S-Q/20B	2
11	710-008	ON/OFF PLATE 1132	2
12	EGSC500	EGSC500 1/2 D/C 2SCR NMC CONN	1
13	157-001	16/35 JT ELECTRIC CORD 96" BLACK POWER CORD NEMA 5-15P	1
14	486-013	1HP MOTOR FOR DS12 AND KVF3	1
15	HHC5031016	5/16-18 X 1 HHCS GR5 Z	4
16	UFWZ031	5/16 USS F/W Z	8
17	SLWZ031	5/16 SPLIT L/W Z	4
18	FHN5031	5/16-18 FHN GR5 ZINC	4
19	342-034	GUARD, DISC FOR DS12 AND DS12V	1
20	HHC5037012	3/8-16 X 3/4 HHCS GR5 Z	4
21	SLWZ037	3/8 SPLIT L/W Z	4
22	UFWZ037	3/8 USS F/W Z	4
23	160-002-REV1	DS12, DS12V, S612V 12" DISC HOLDER ASSEMBLY-REVISION 1	1
24	829-016	TABLE, WORK FOR DS12 AND DS12V	1
25	441-017	KNOB, FOR DS10, DS10-4S, AND DS12 WORK TABLES	2
26	340-003	ANGLE GAGE FOR DS10 AND DS12 WORK TABLE	1
27	HHC5025012	1/4-20 X 3/4 HHCS GR5 Z	1
28	UFWZ025	1/4 USS F/W Z	2
29	SLWZ025	1/4 SPLIT L/W Z	1
30	FHN5025	1/4-20 FHN GR5 Z	1
31	157-002	ELECTRIC CORD FOR SMALL SANDERS W 1HP MOTOR	1



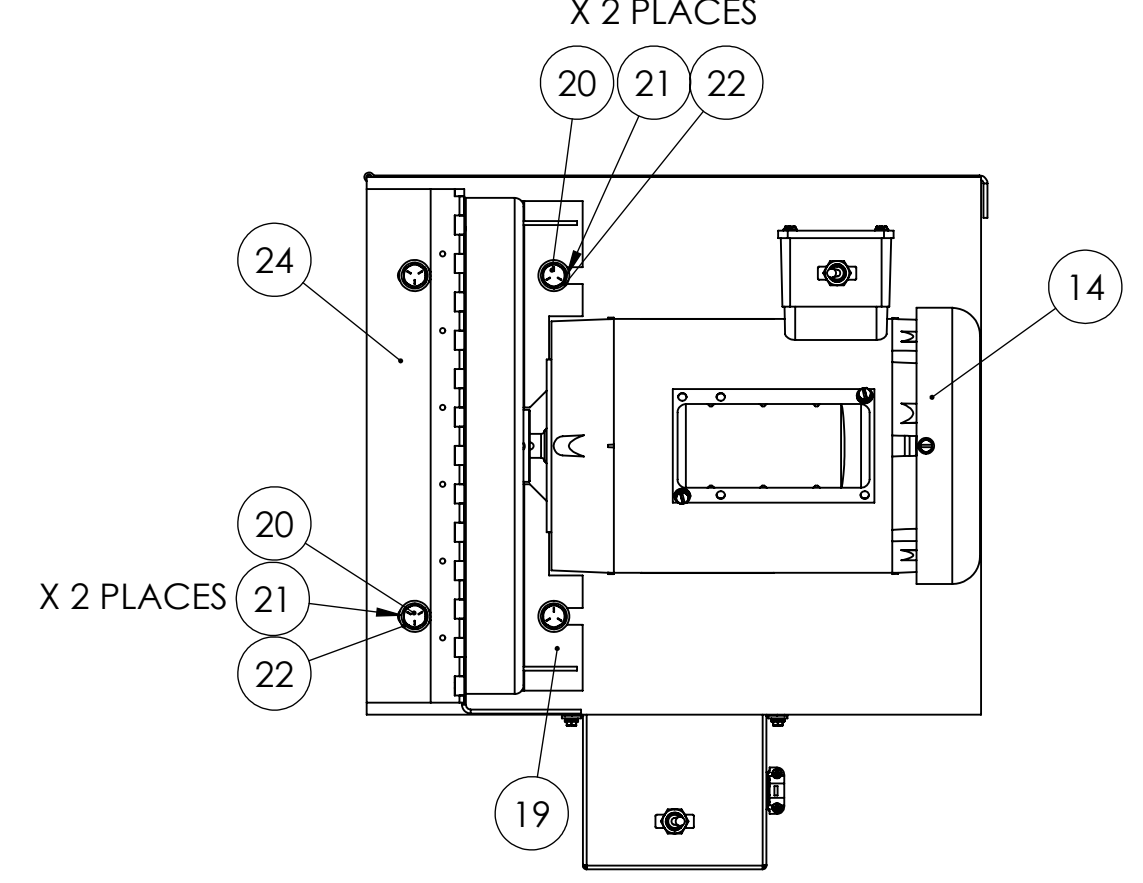
DETAIL B
SCALE 1 : 1
MOTOR MOUNT
DETAILS



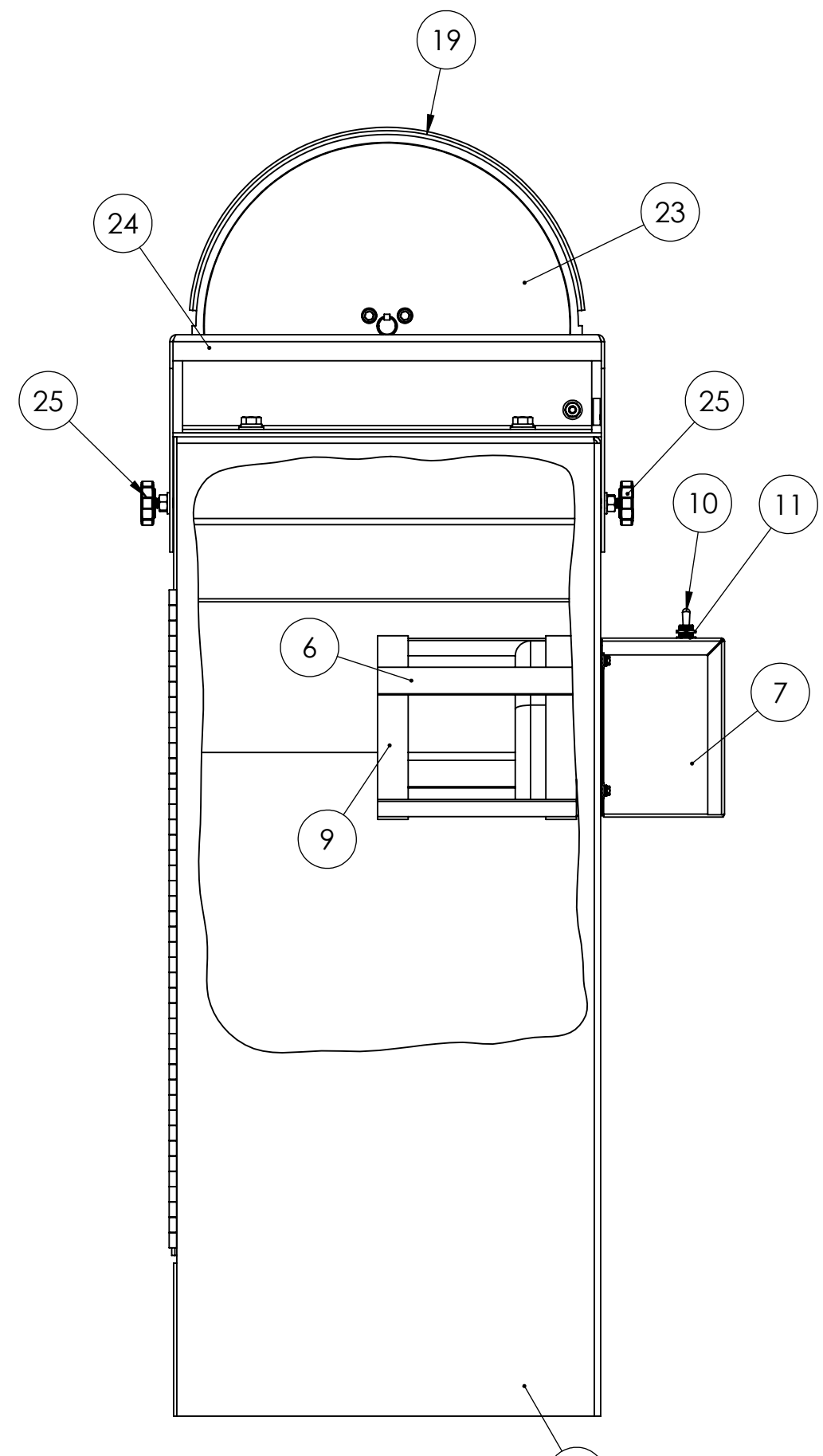
DETAIL C
SCALE 1 : 1
MITRE BRACKET MOUNTING
DETAILS



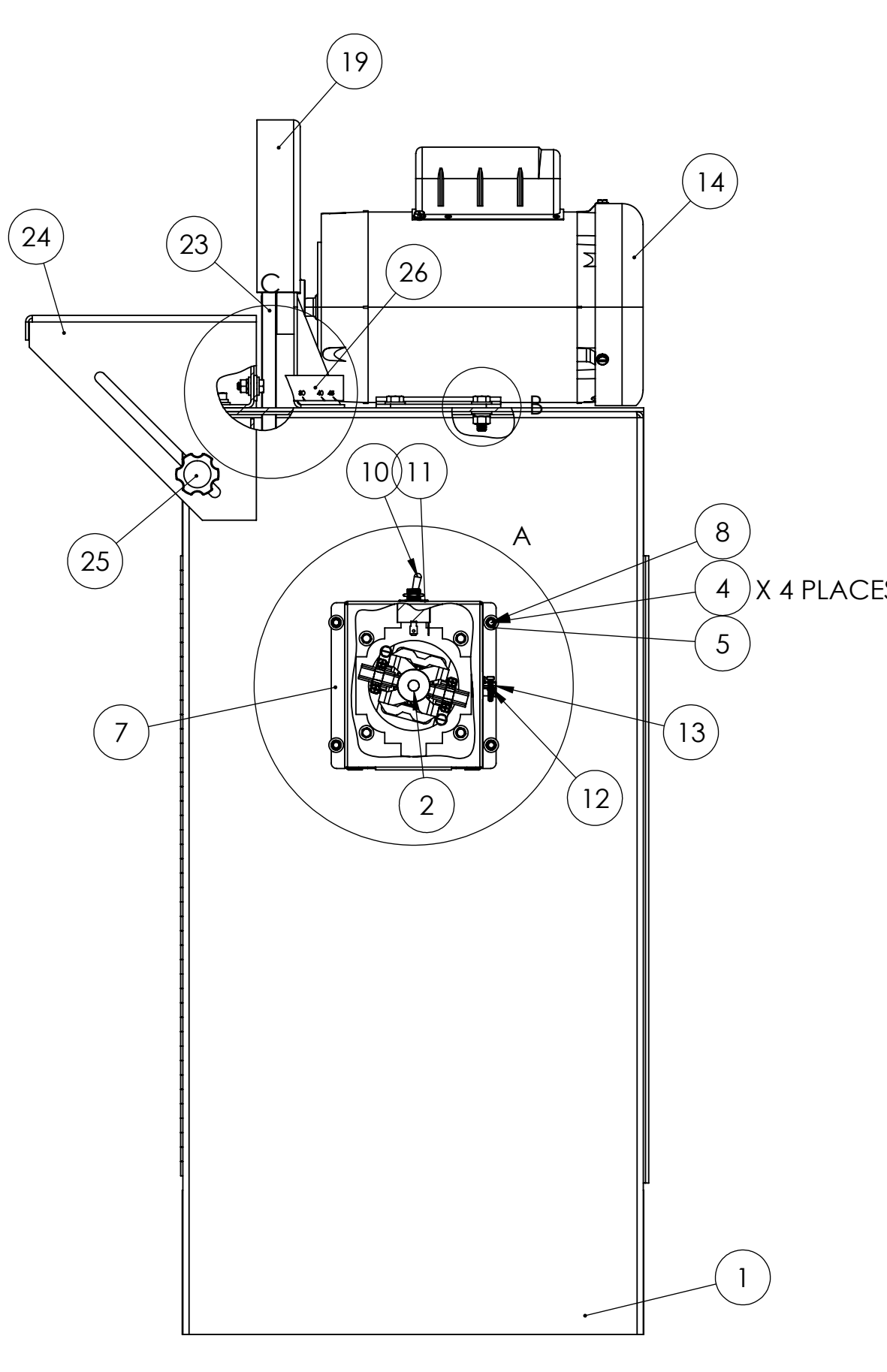
TOP VIEW



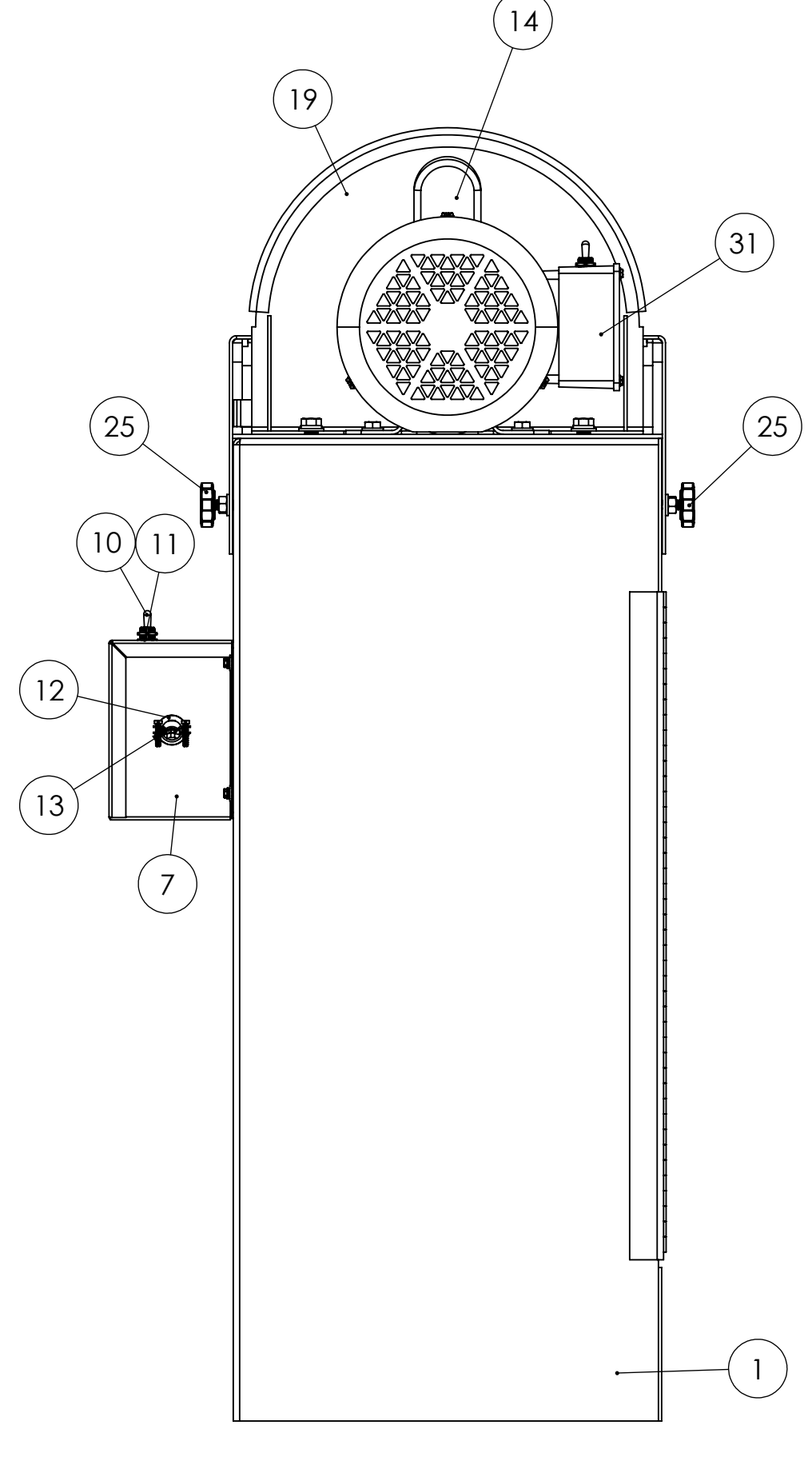
DISC GUARD MOUNTING
AND WORK TABLE
MOUNTING DETAILS



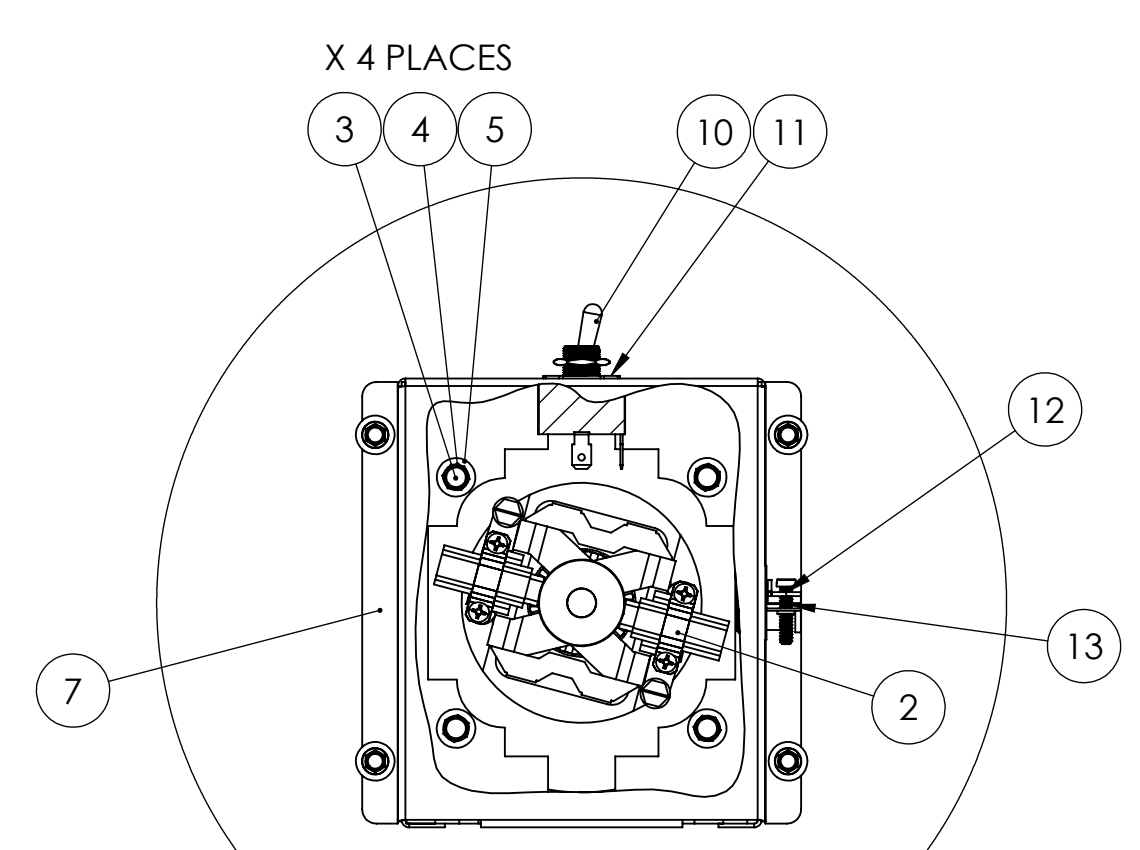
LEFT VIEW



FRONT VIEW



RIGHT VIEW



DETAIL A
SCALE 2 : 5
VACUUM MOTOR DETAILS

PROPRIETARY/CONFIDENTIAL
THIS INFORMATION CONTAINED IN THIS DRAWING IS THE SOLE PROPERTY OF KALAMAZOO TOOL WORKS, INC. AND IS NOT TO BE REPRODUCED OR TRANSMITTED IN ANY FORM OR BY ANY MEANS, ELECTRONIC OR MECHANICAL, INCLUDING PHOTOCOPYING, RECORDING, OR BY ANY INFORMATION STORAGE AND RETRIEVAL SYSTEM, WITHOUT THE WRITTEN PERMISSION OF KALAMAZOO TOOL WORKS, INC.

UNLESS OTHERWISE SPECIFIED:	NAME	DATE
DIMENSIONS ARE IN INCHES	DRAWN BY	
TOLERANCES:	CHECKED	
FRACTIONS: 1/8, 1/4, 3/8, 1/2	ENG APPR	
DECIMALS: .0005, .001, .002, .005, .010, .015, .030, .050, .060, .070, .080, .090, .100, .125, .150, .175, .200, .250, .300, .375, .400, .500, .625, .750, .875, 1.000	MFG APPR	
THREE PLACE DECIMAL: .001, .002, .005, .010, .015, .030, .050, .060, .070, .080, .090, .100, .125, .150, .175, .200, .250, .300, .375, .400, .500, .625, .750, .875, 1.000	D.A.	
INTERFERE GEOMETRIC TOLERANCES PER	COMMENTS:	
MATERIAL:		
NEATNESS	USED ON	FINISH
APPLICATION	DO NOT SCALE DRAWING	

KALAMAZOO
TITLE: 12" DISC SANDER WITH VACUUM DUST COLLECTOR
SIZE: DWG. NO. E DS12V
SCALE: 1:2 WEIGHT: SHEET 1 OF 1