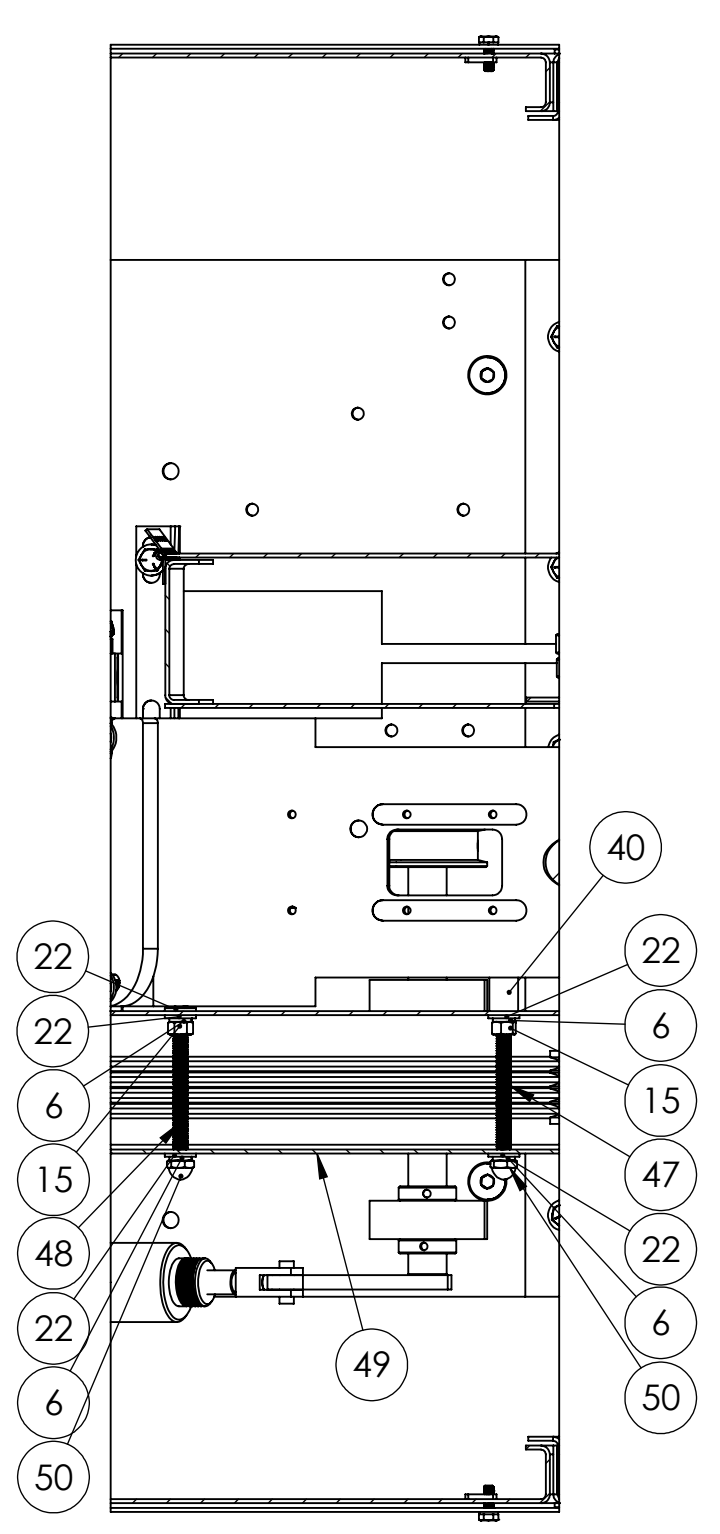
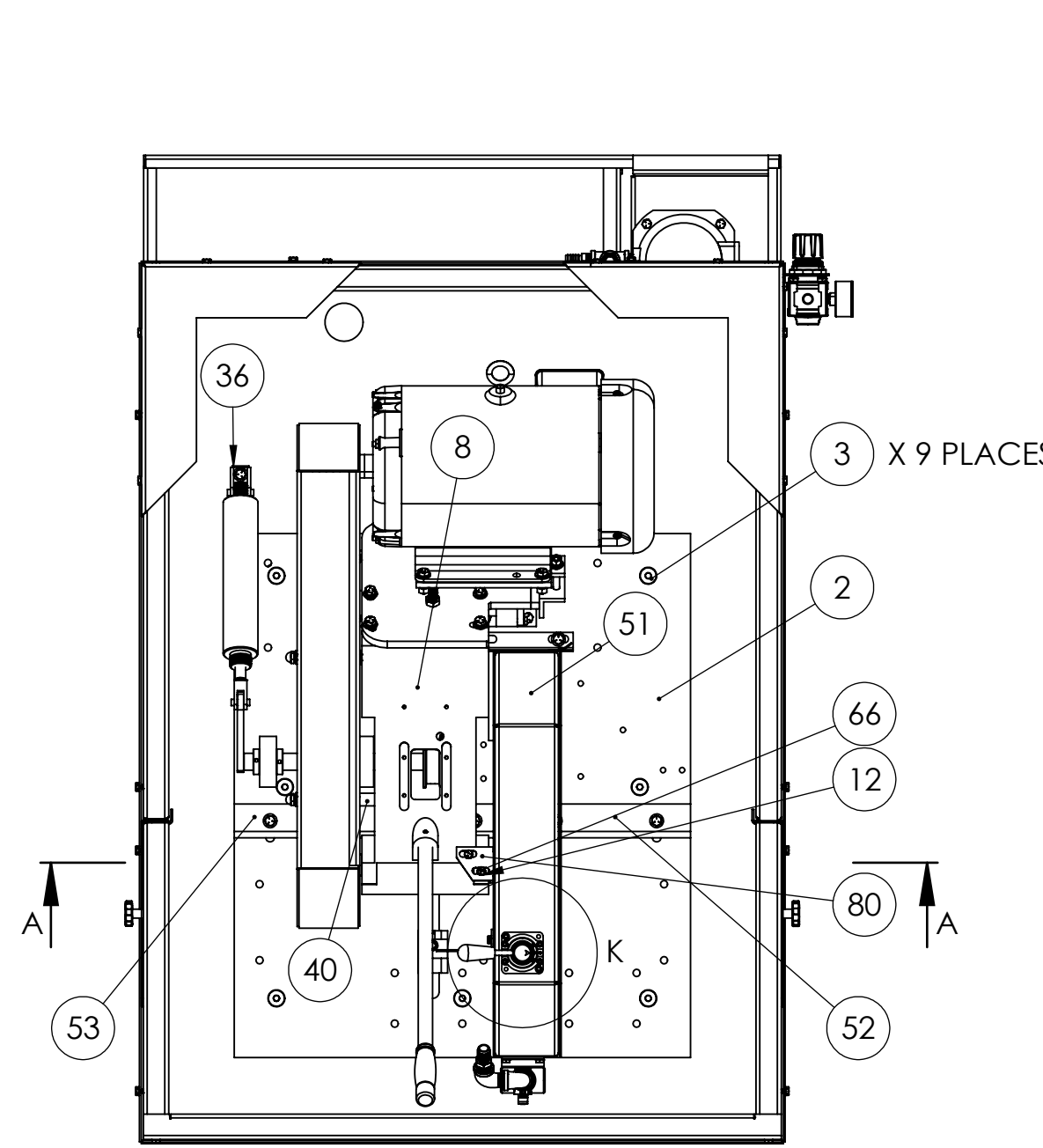


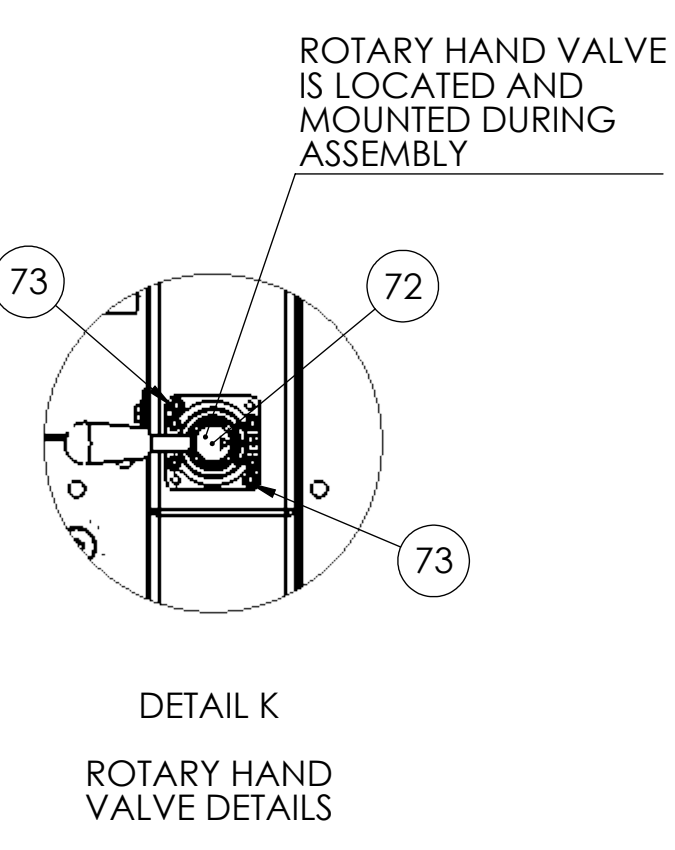
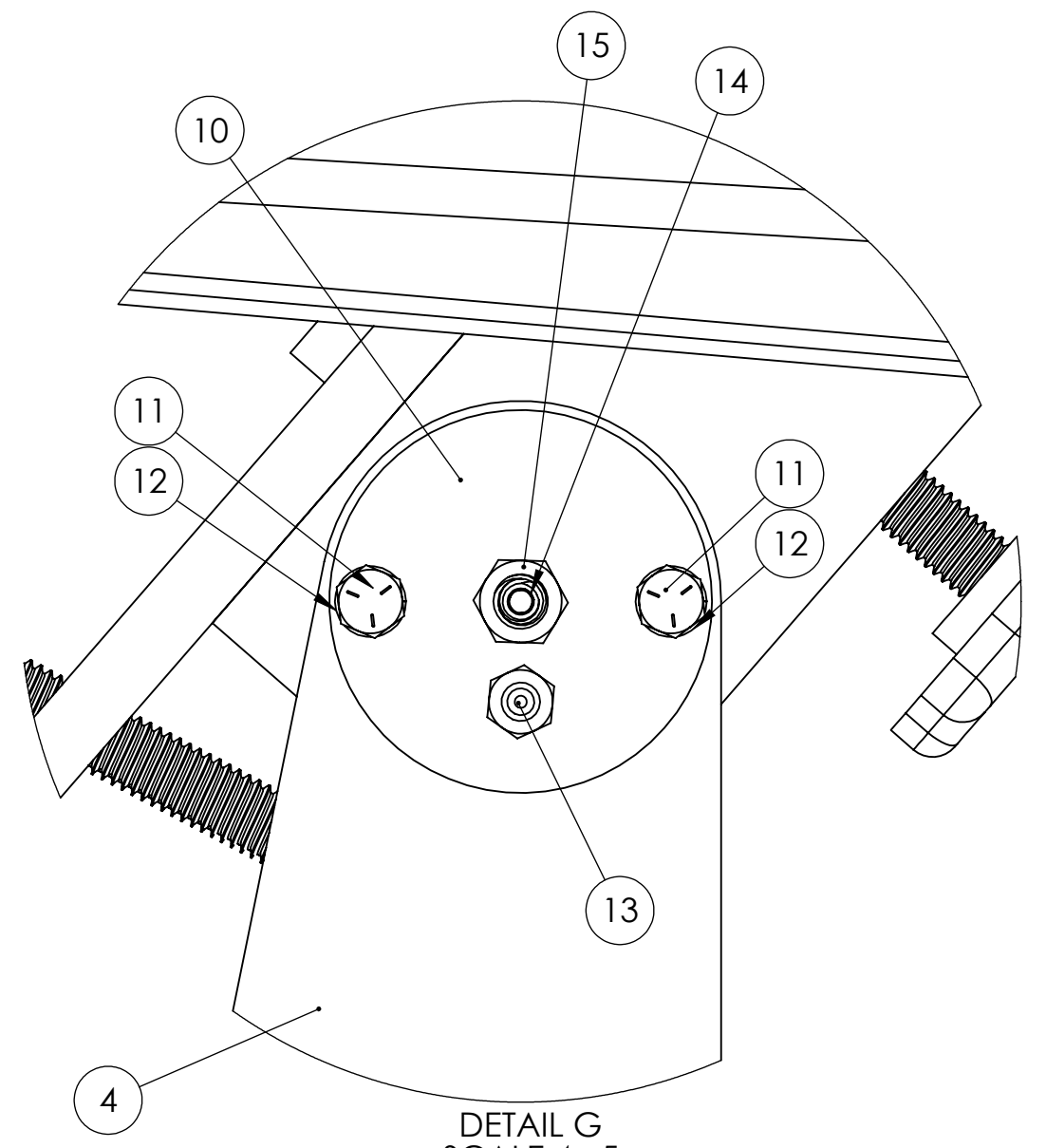
ITEM NO.	PART NUMBER	DESCRIPTION	QTY.
1	716-019W	STAND ASSEMBLY FOR K20SW SAW	1
2	556-037	PLATE, TOP FOR K20SW	1
3	FSCA050024	1/2-13 X 1-1/2 FSHCS	9
4	831-002	TRUNNION, LEFT AND RIGHT SET FOR K16-18, AND K20SSF	2
5	HHC5037040	3/8-16 X 2-1/2 HHCS GR5 Z	13
6	SLW2037	3/8 SPLIT L/W Z	37
7	700-002	PIN, TRUNNION FOR K16-18 AND K20SSF (OLD STYLE)	1
8	002-005	SAW ARM FOR K16-18, KM16-18, AND K20SSF SAW	1
9	044-004	K20 SPINDLE BEARING	2
10	641-002	TRUNNION CAP FOR K16-18 AND K20-22	2
11	HHC5025016	1/4-20 X 1 HHCS GR5 Z	4
12	SLW2025	1/4 SPLIT L/W Z	40
13	ZERK012000	1/8-27 X 11/16 STRT LUBE FITTING	2
14	SSCA031016	5/16-18 X 1 SOC SET CONE PT	2
15	FHN5037	3/8-16 FHN GR5 Z	14
16	701-010	SPINDLE W TIGHT FLANGE FOR K16-18, K20SSF, K20E SAWS	1
17	292-011	LOOSE FLANGE FOR K16-20, KM16-18, KM20-22	1
18	537-027	SPINDLE NUT FOR K16-20	1
19	SSKA031006	5/16-18 X 3/8 SOC SET KNURL PT.	2
20	486-010	MOTOR MOUNT PLATE FOR K16-20 ASSEMBLY	1
21	HHC5037020	3/8-16 X 1-1/4 HHCS GR5 Z	8
22	UFWZ037	3/8 USS F/W Z	38
23	696-029	MOTOR PLATE TENSION SCREW FOR K16-K20 SAWS	1
24	FJNZ050	1/2-13 F H JAM NUT Z	1
25	486-020	15HP MOTOR FOR K20SSF-15, K20SW-15, KM20-22/15, K20FS, K20E	1
26	041-076ASSY	BRACKET AND BUSHING FOR CHAIN TAKE-UP FOR K20SW-2 REQUIRED	2
27	HHC5037024	3/8-16 X 1-1/2 HHCS GR5 Z	4
28	700-015	SHAFT, CHAIN TAKE UP, FOR K20W	1
29	123-016	S6 IDLER PULLEY LOCK COLLAR	2
30	002-015	ARM PIVOT, CHAIN VISE FOR K20SW	1
31	560-036	CHAIN VISE PULLEY FOR K20SW SAW	1
32	SSKA025006	1/4-20 X 3/8 SOC SET KNURL PT.	2
33	041-109	MOUNTING BRACKET K20W AND K20E AIR CHAIN VISE CYLINDER	1
34	2000DVS-6.00-2	2000DVS-6.00-2 266 DA AIR CYLINDER FOR K20SW, K20E, KM20-22	1
35	M94	M94 CLEVIS WITH PIN FOR 2000DVS-6.00-2	1
36	BP-19C	BP-19C PIVOT BRACKET	1
37	HHC5037016	3/8-16 X 1 HHCS GR5 Z	7
38	SHCA037020	3/8-16 X 1-1/4 SHCS	2
39	342-121	INNER BELT GUARD (NEW STYLE) FOR K20E, K20SW, AND K20 SERIES 20HP SAWS	1
40	0.75DIA X 0.875LONG CRS	7/8 LONG OF 3/4 ROUND CRS	1
41	049-116	SPACER BUSHING FOR K20 SERIES SPINDLE	1
42	560-020	MOTOR PULLEY SHEAVE FOR K20SW-15HP, SPINDLE PULLEY SHEAVE FOR KM20-22W-15HP & K20E	1
43	049-003	MOTOR PULLEY BUSHING FOR K16-18, KM16-18, K20SSF-15, K20RS-15, K20SW-15, KM20-22-15HP, KM20-22W-15 FOR K16-18, KM16-18, K20SSF-15, K20RS-15, K20SW-15, KM20-22-15HP, KM20-22W-15	1
44	43V530SDS	MOTOR PULLEY SHEAVE FOR K16-18, KM16-18, K20SSF-15, K20RS-15, K20SW-15, KM20-22-15HP, KM20-22W-15 (K20SSF 7 1/2 HP), SPINDLE PULLEY SHEAVE FOR K20SW-15HP & 20HP	1
45	049-018	SPINDLE PULLEY BUSHING FOR K20SSF-20HP, K20SW-15 & 20HP, K20E, KM20-22-20HP, KM20-22W-15HP	1
46	051-012	3V630 V-BELT FOR KM20-22/20HP AND 15HP	4
47	RND-0.375 16THRDRODX6.25	6-1/4 INCHES OF RND- 3/8-16 THREADED ROD	1
48	RND-0.375 16THRDRODX5.375	5-3/8 INCHES OF RND- 3/8-16 THREADED ROD	1
49	342-122	OUTER BELT GUARD (NEW STYLE) FOR K20E, K20SW, AND K20 SERIES 20HP SAWS	1
50	CPNZ037	3/8-16 CAP NUT NICKEL	2
51	342-013	STANDARD WHEEL GUARD FOR K20SSF	1
52	293-014	FENCE, RIGHT HAND FOR K20SW	1
53	293-013	FENCE, LEFT HAND FOR K20SW	1
54	053-011	BLOCK, CHAIN ANCHOR FOR KM20-22, K20SW	1
55	053-011T-NUT	T-NUT FOR K20 SERIES CHAIN ANCHOR BLOCK	1
56	709-003	STOP, DOWN FOR K16-18 AND K20SSF SAWS	1
57	FHN5075	3/4-10 FHN GR5 Z	1
58	SHCA037016	3/8-16 X 1 SHCS	1
59	K20ERESERVOIR-ASSEMBLY	K20E RESERVOIR TANK	1
60	577-002	1/4HP COOLANT PUMP AND MOTOR	1
61	HHC5031016	5/16-18 X 1 HHCS GR5 Z	4
62	UFWZ031	5/16 USS F/W Z	4
63	SLWZ031	5/16 SPLIT L/W Z	4
64	FHN5031	5/16-18 FHN GR5 ZINC	4
65	041-112	SWITCH BRACKET FOR E2PB BUTTON ENCLOSURE	1
66	HHC5025008	1/4-20 X 1/2 HHCS GR5 Z	26
67	342-150	SPLASH GUARD ASSEMBLY FOR K20SW	1
68	HHC5025012	1/4-20 X 3/4 HHCS GR5 Z	10
69	381-009	HANDLE WITH GRIP FOR K16-20 ABRASIVE SAW	1
70	441-015	907B-2500-1.00S 1/4 THUMBSCREW 1-1/2 DIA	2
71	389-011	COOLANT HOSE MOUNTING BRACKET ASSEMBLY W FLEXIBLE HOSE & FITTINGS FOR K20 WET SERIES SAWS	1
72	912-014	HVN4200 8 PARKER 1/4 WAY VALVE, 3P ROTARY HAND VALVE	1
73	SHCA025020	1/4-20 X 1-1/4 SHCS	2
74	P32KA00MR	P32 ANGLE BRACKET	1
75	641-021	P32RB92BNNP PARKER REGULATOR 1/4" 125PSI RELIEVING MODULAR REGULATOR	1
76	18-013-212	18-013-212 1.5- 1/8 CBM-O-160	1
77	050CL40BLN	050CL40BLN 1/2 BLACK CLOSE NIPPLE	1
78	05015BLTI	1/2" BLACK PIPE TEE	1
79	BN54	BN54 108-1008 HOSE BARB 5/8H X 1/2MNPT	2
80	342-030	INNER WHEEL GUARD FOR K16-18, K20SSF SAWS	1



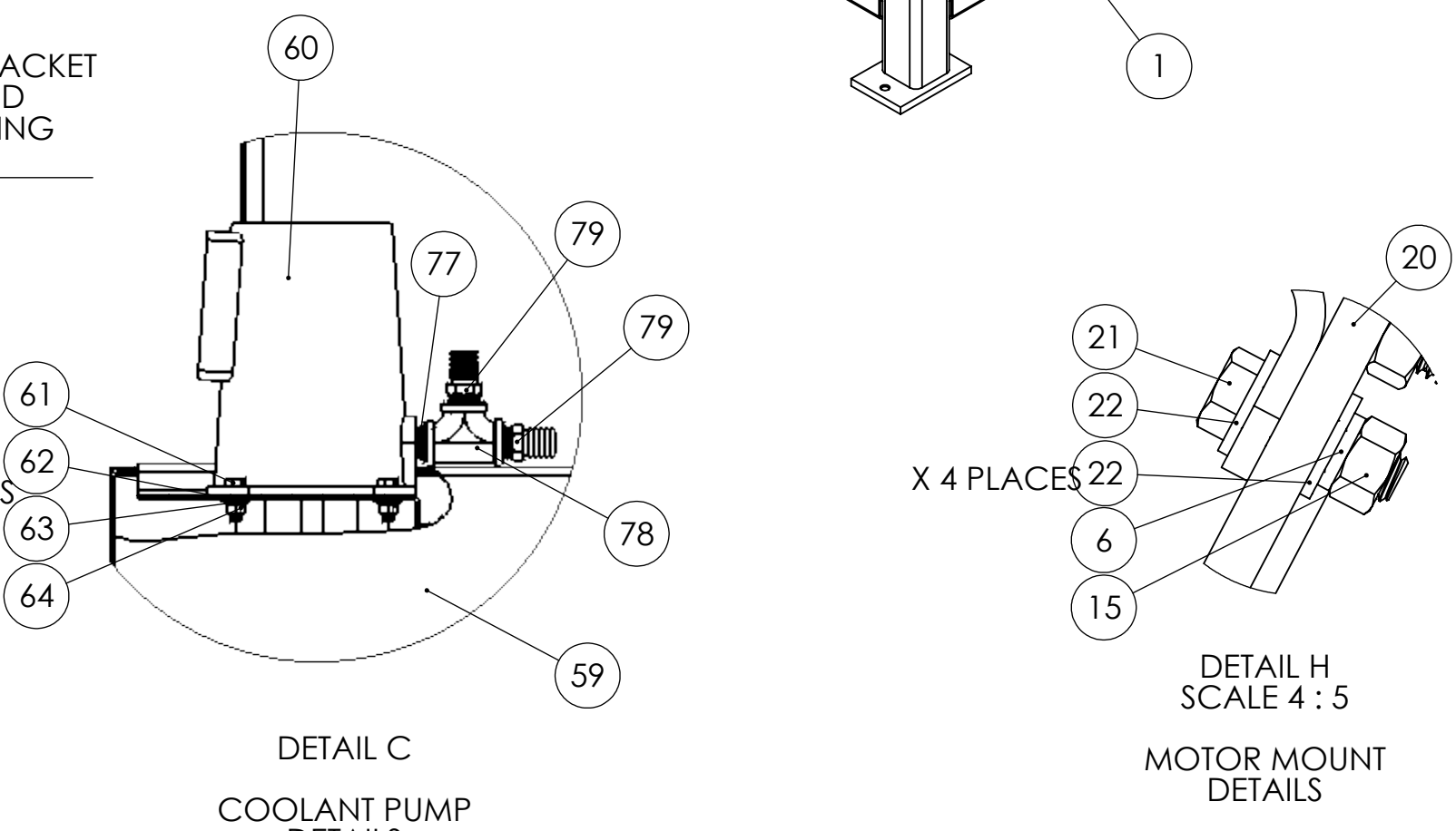
SECTION H  
ATTACHMENT OF  
OUTER BELT GUARD



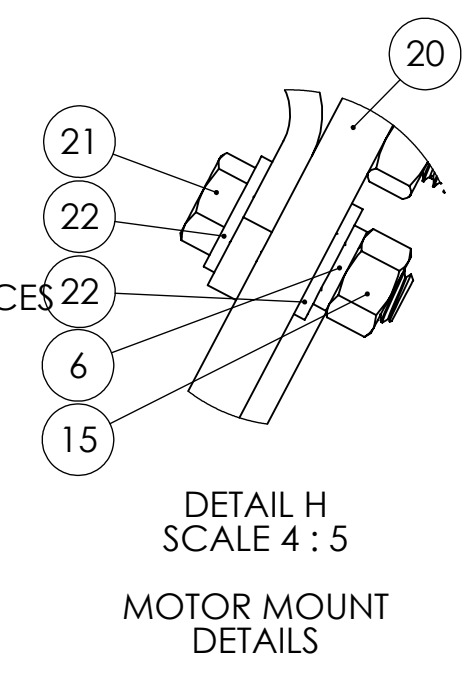
DETAIL G  
SCALE 4:5  
TRUNNION CAP  
BOTH SIDES



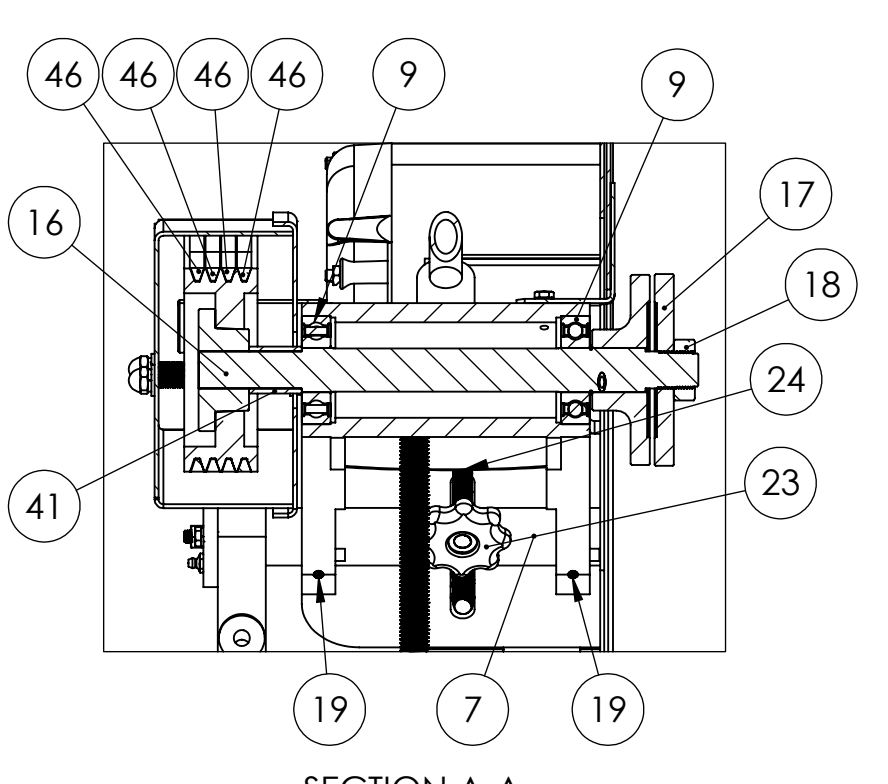
DETAIL F  
AIR REGULATOR  
DETAILS



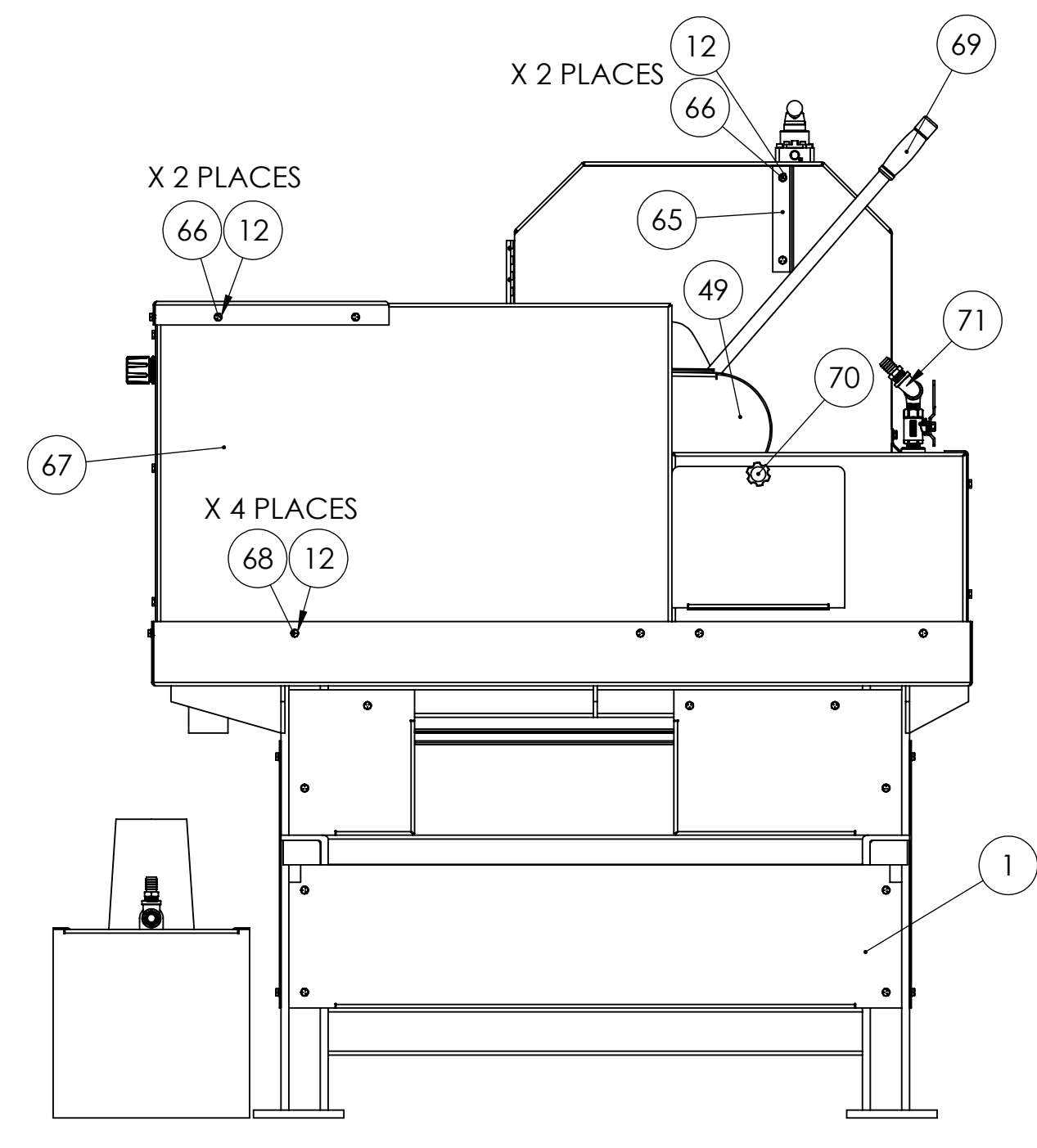
DETAIL C  
COOLANT PUMP  
DETAILS



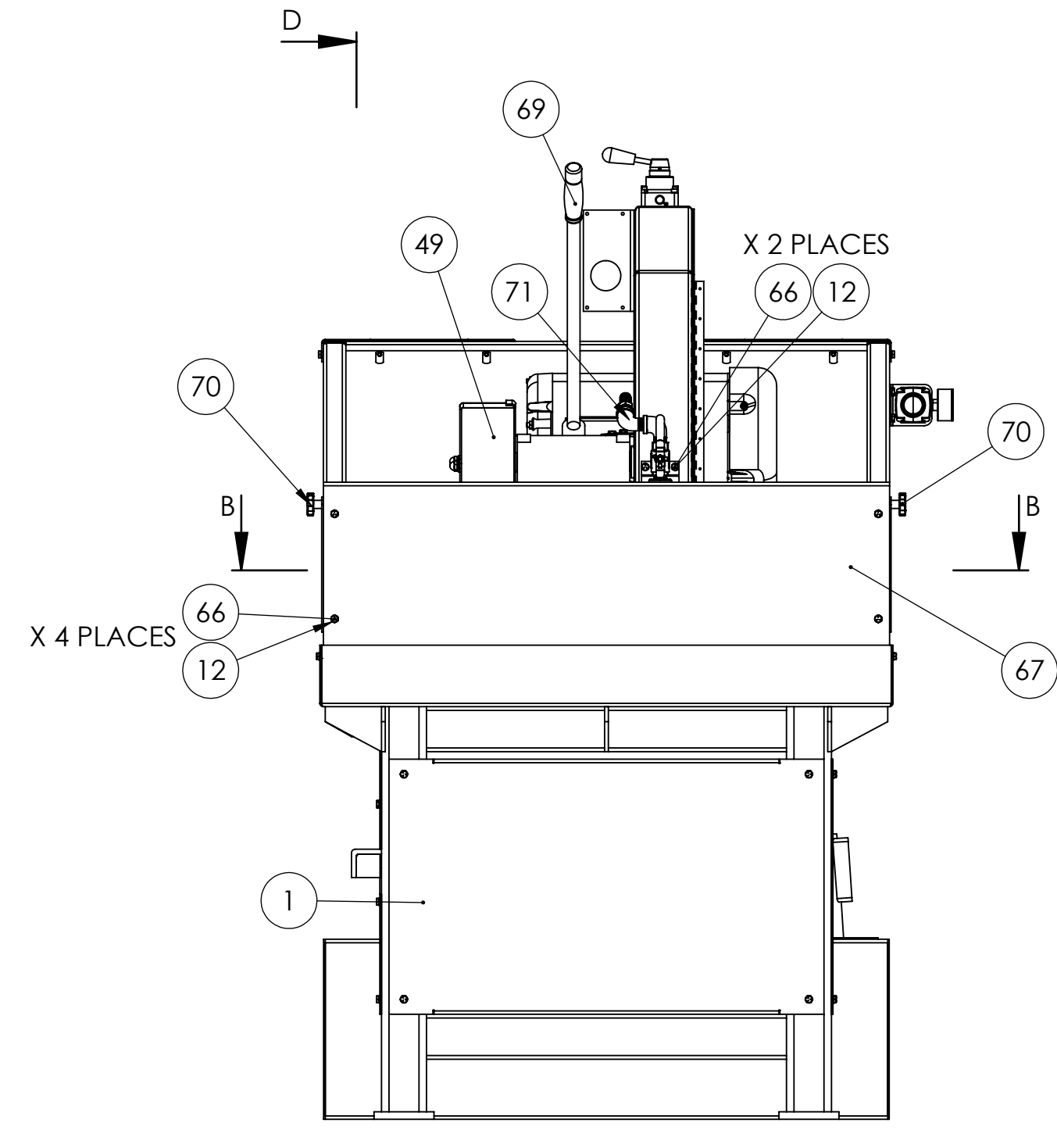
DETAIL H  
SCALE 4:5  
MOTOR MOUNT  
DETAILS



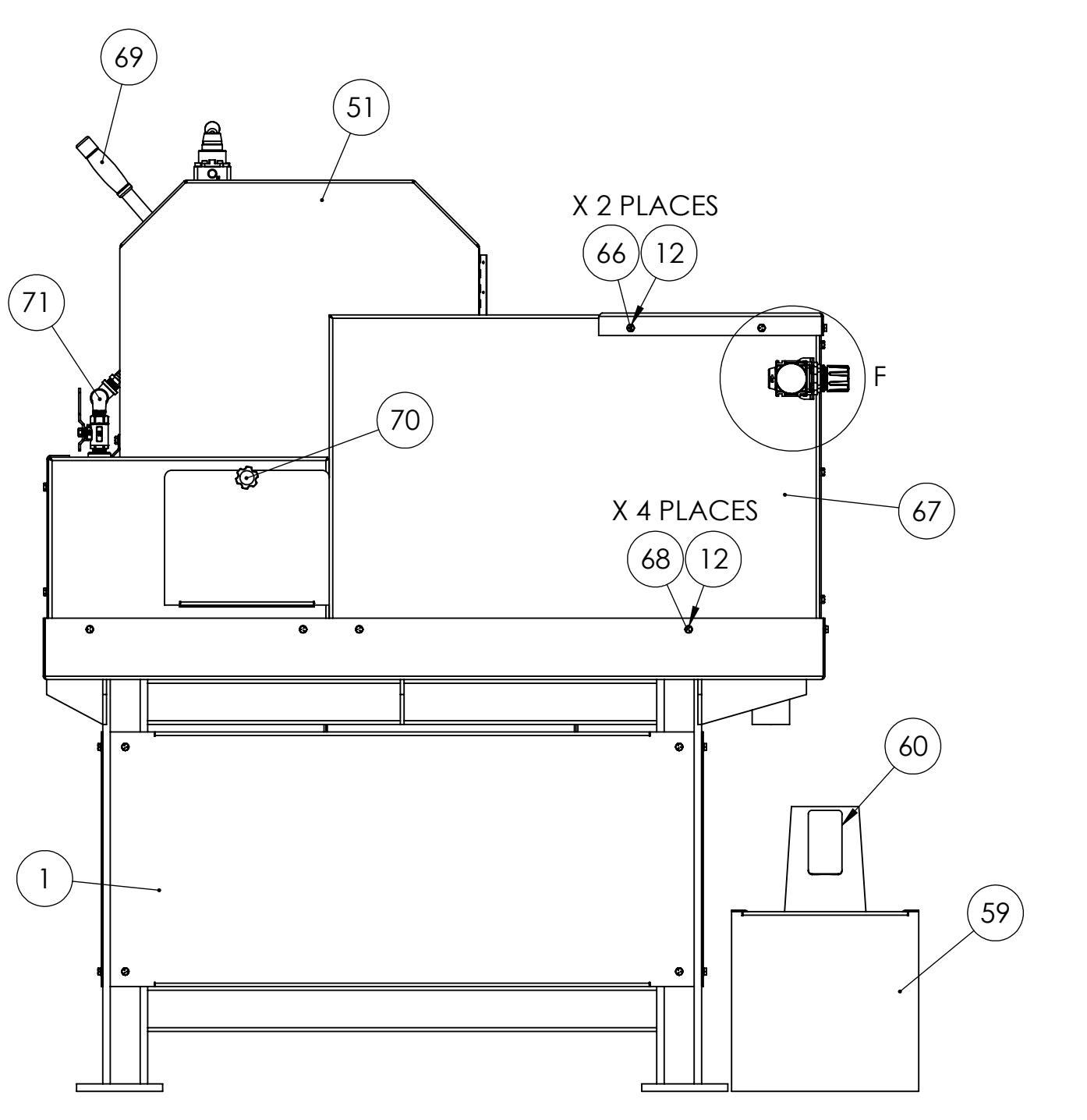
SECTION A-A  
INTERNAL OF SPINDLE



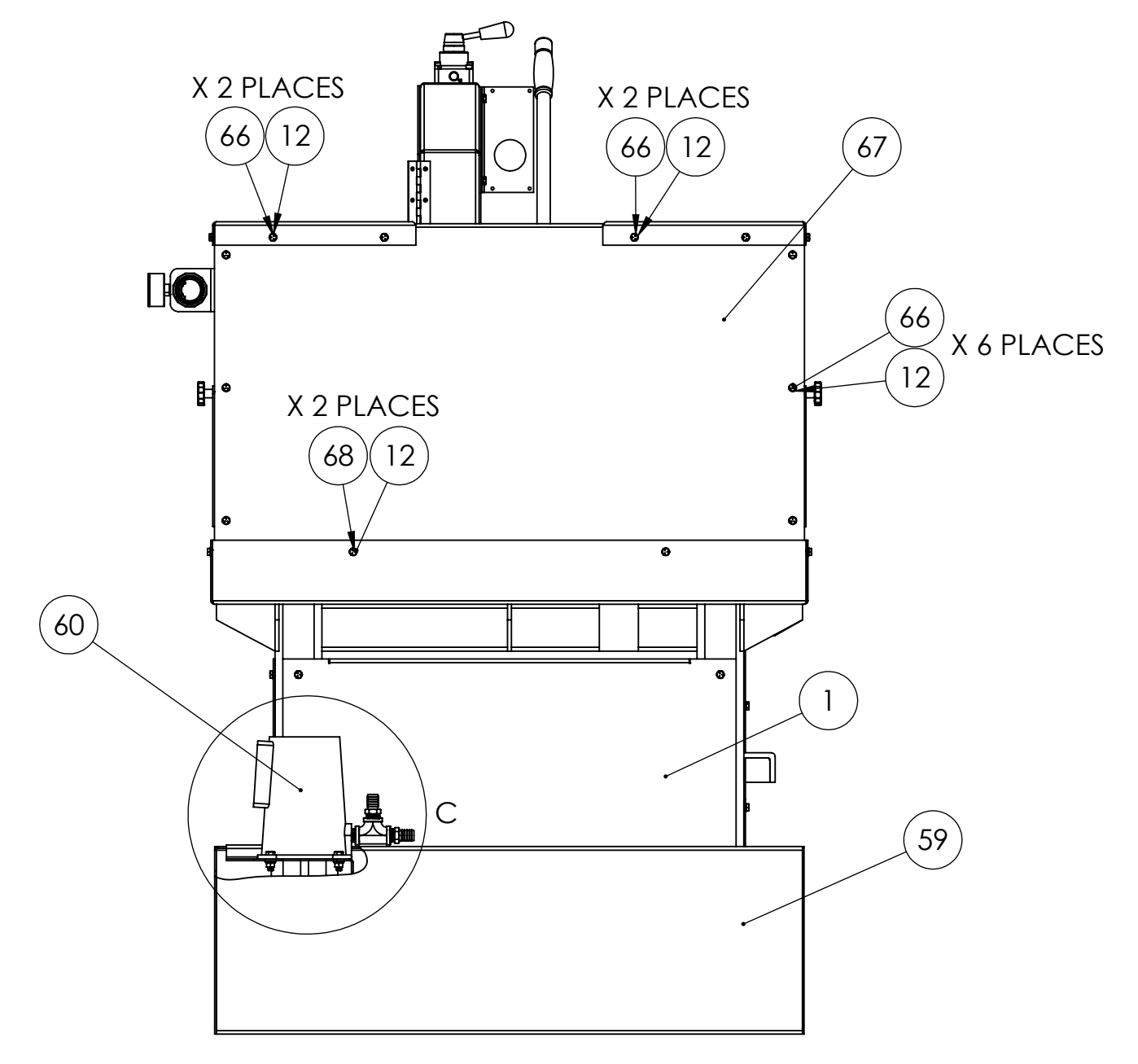
LEFT SIDE VIEW



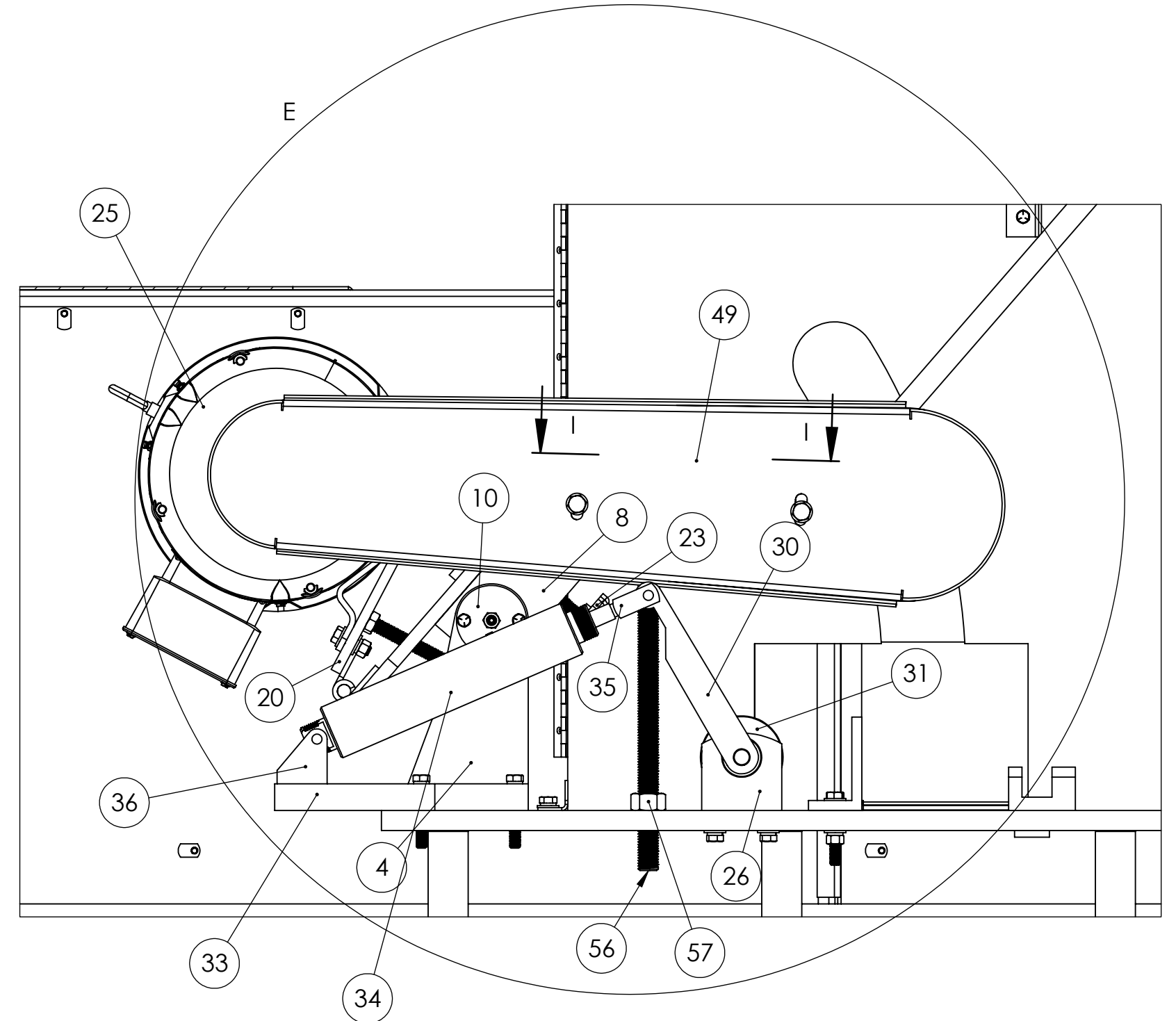
FRONT VIEW



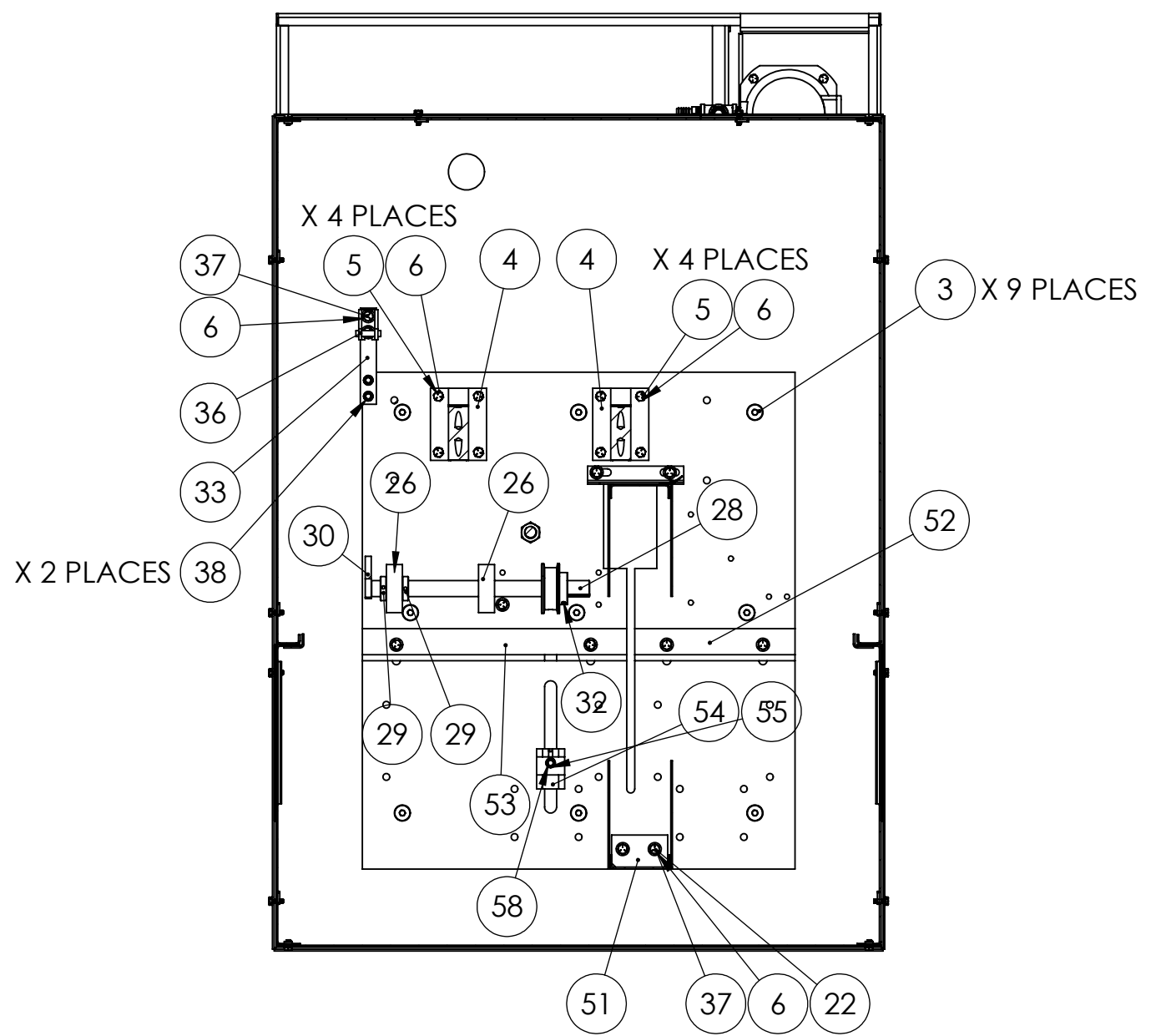
RIGHT SIDE VIEW



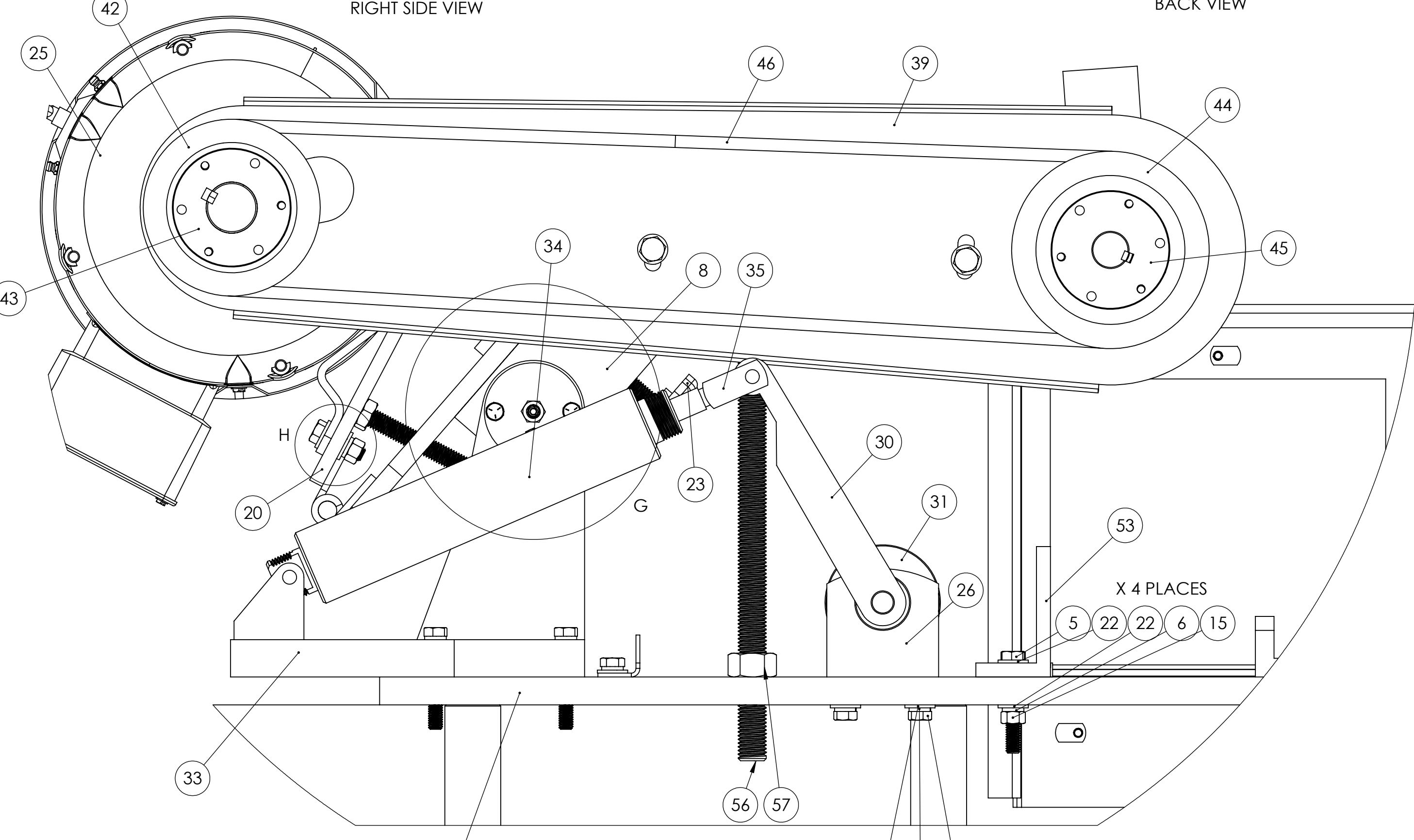
BACK VIEW



SECTION D-D  
INTERNAL LEFT SIDE VIEW



SECTION B-B  
SCALE 1:10



DETAIL E  
SCALE 2:5  
DETAILS OF  
BELTS AND PULLEYS

PROPRIETARY AND CONFIDENTIAL  
THIS DRAWING IS THE PROPERTY OF KALAMAZOR  
REPRODUCTION IN PART OR AS A WHOLE  
WITHOUT THE WRITTEN PERMISSION OF  
KALAMAZOR IS PROHIBITED.

UNLESS OTHERWISE SPECIFIED:	NAME	DATE
DIMENSIONS ARE IN INCHES FRACTIONS	DRAWN	
ANGULAR DIMENSIONS THREE PLACE DECIMAL	CHECKED	
DIAMETERS THREE PLACE DECIMAL	ENG APPR	
INFERRED GEOMETRIC TOLERANCES APPLY	AWG APPR	
MATERIAL	D.A.	
	COMMENTS:	
NEET ASST	USED ON	FINISH
APPLICATION	DO NOT SCALE DRAWING	

**KALAMAZOR**  
20" WET CUT-OFF  
SAW/ NO OSC  
K20SW  
SCALE: 1:5 WEIGHT: SHEET 1 OF 1