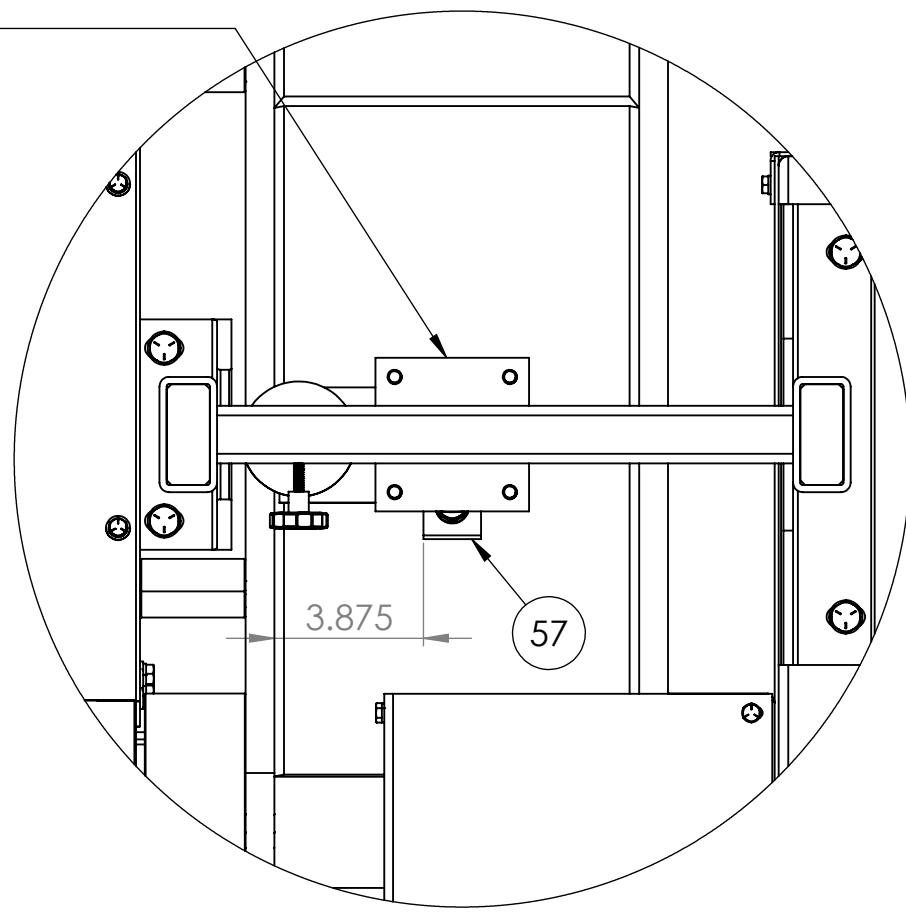
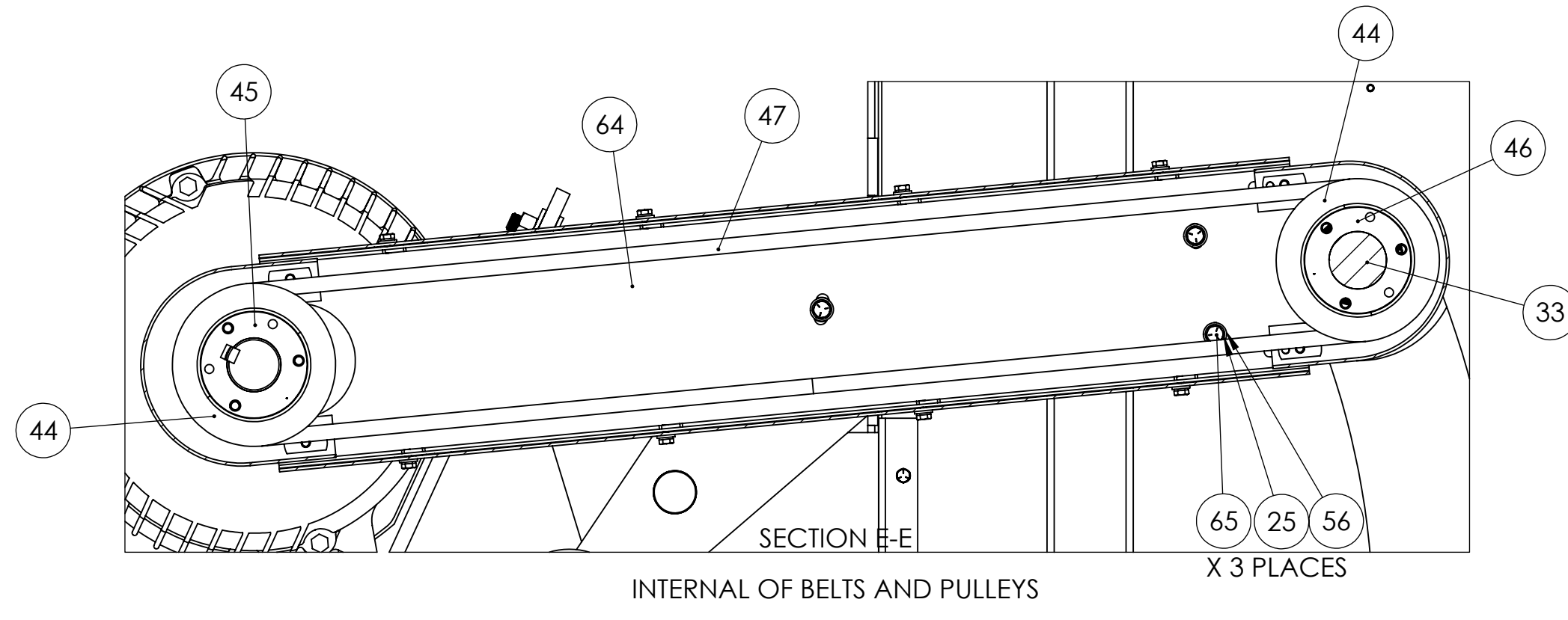


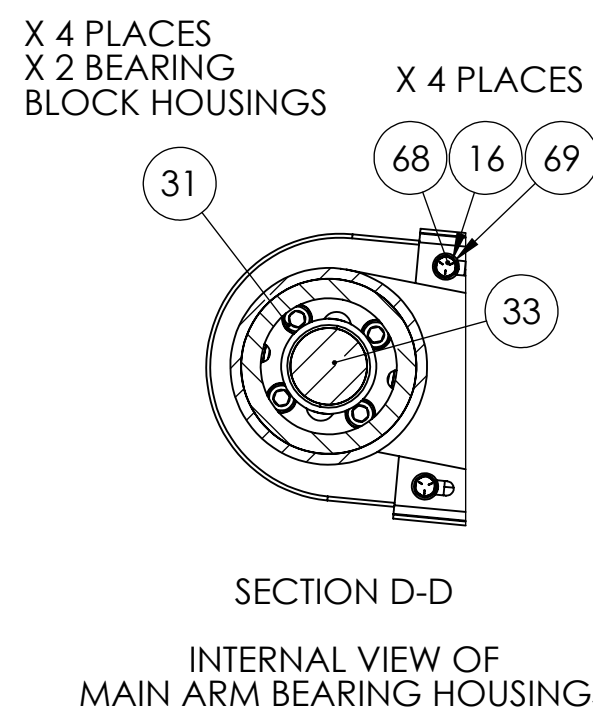
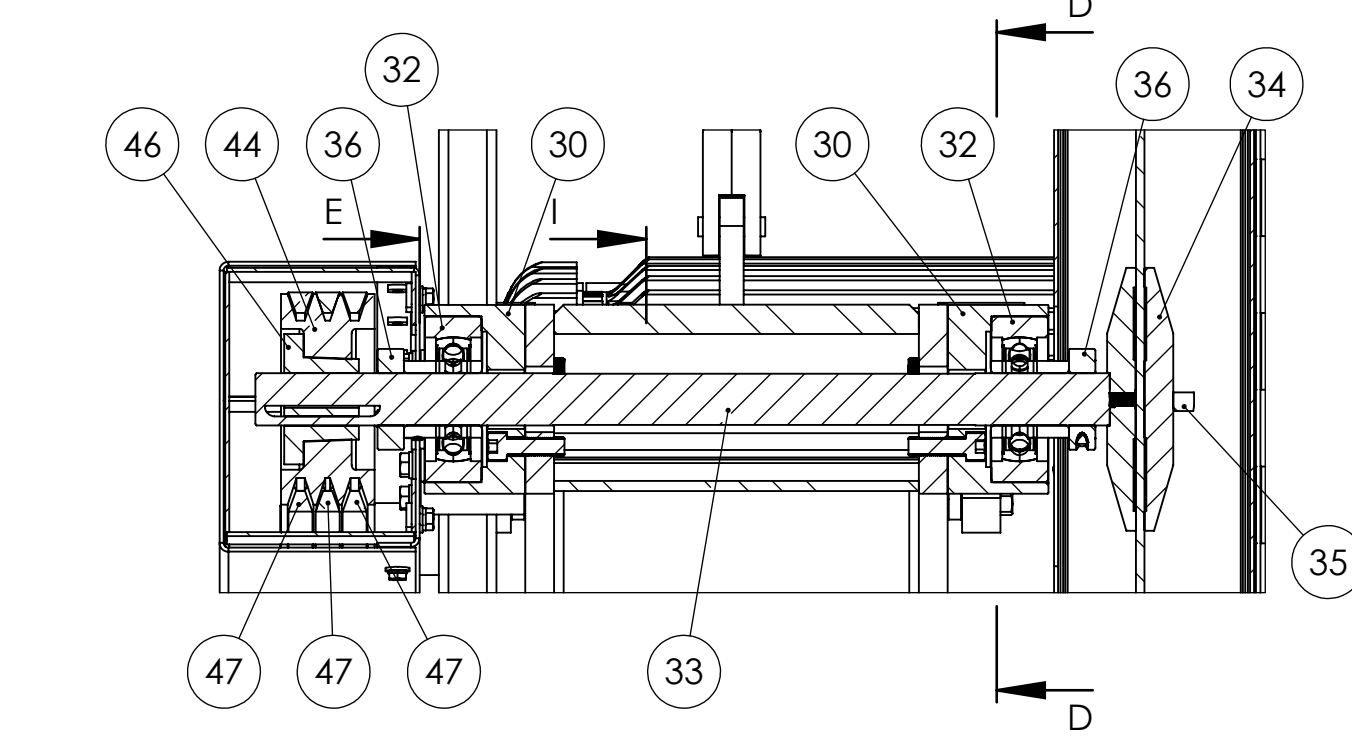
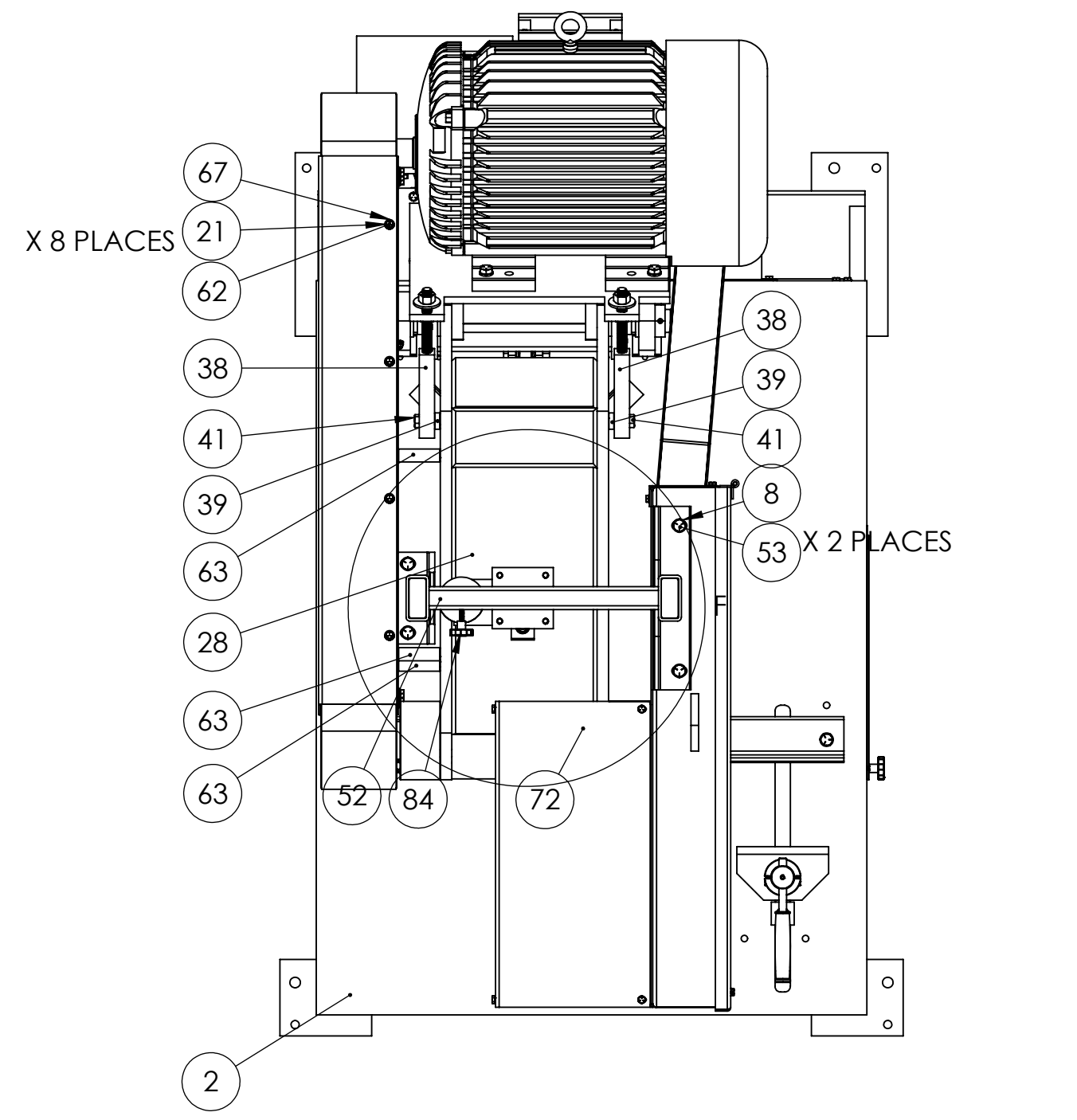
HOLES ARE DRILLED AND TAPPED TO MOUNT BRACKET TO MAIN ARM AS SHOWN. CYLINDER SHOULD BE VERTICAL WHEN IN RETRACTED POSITION.



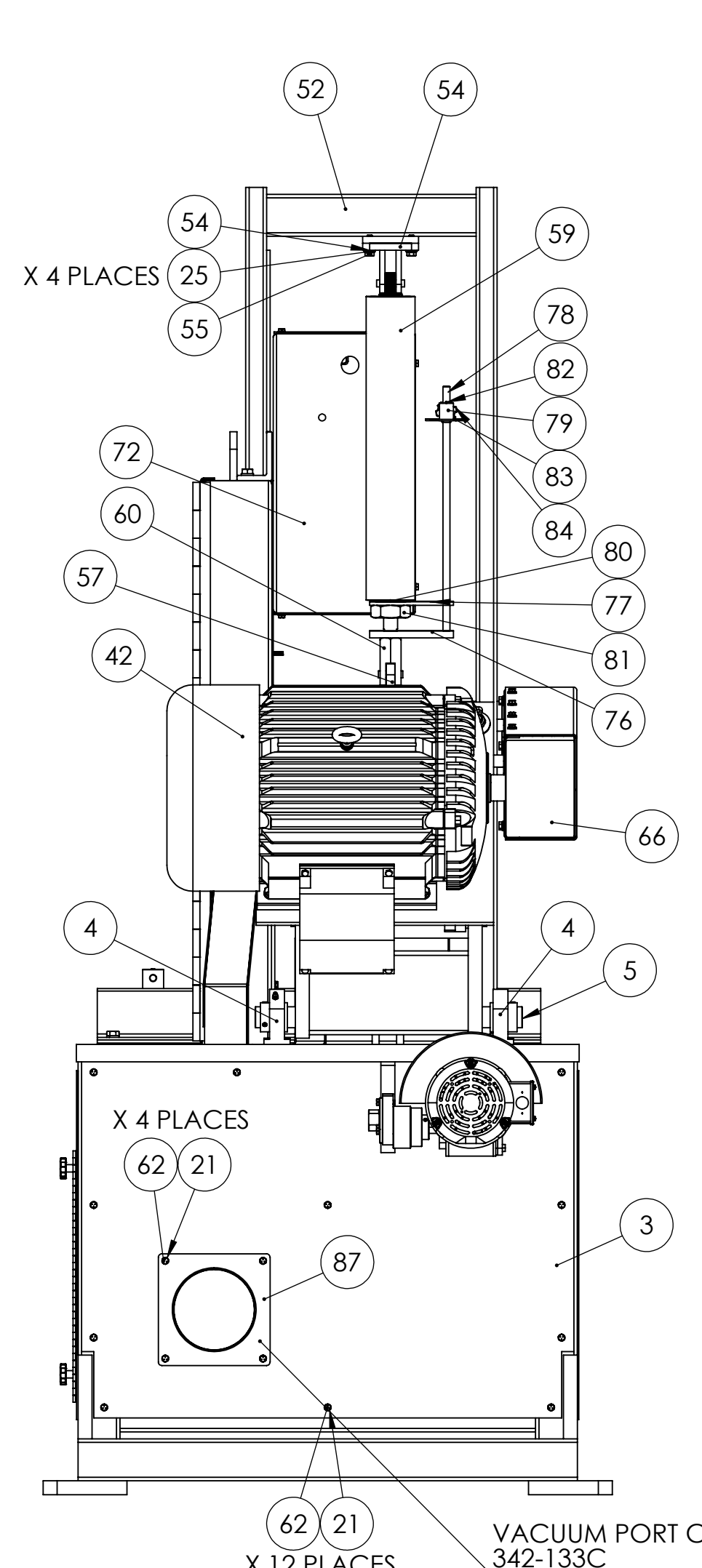
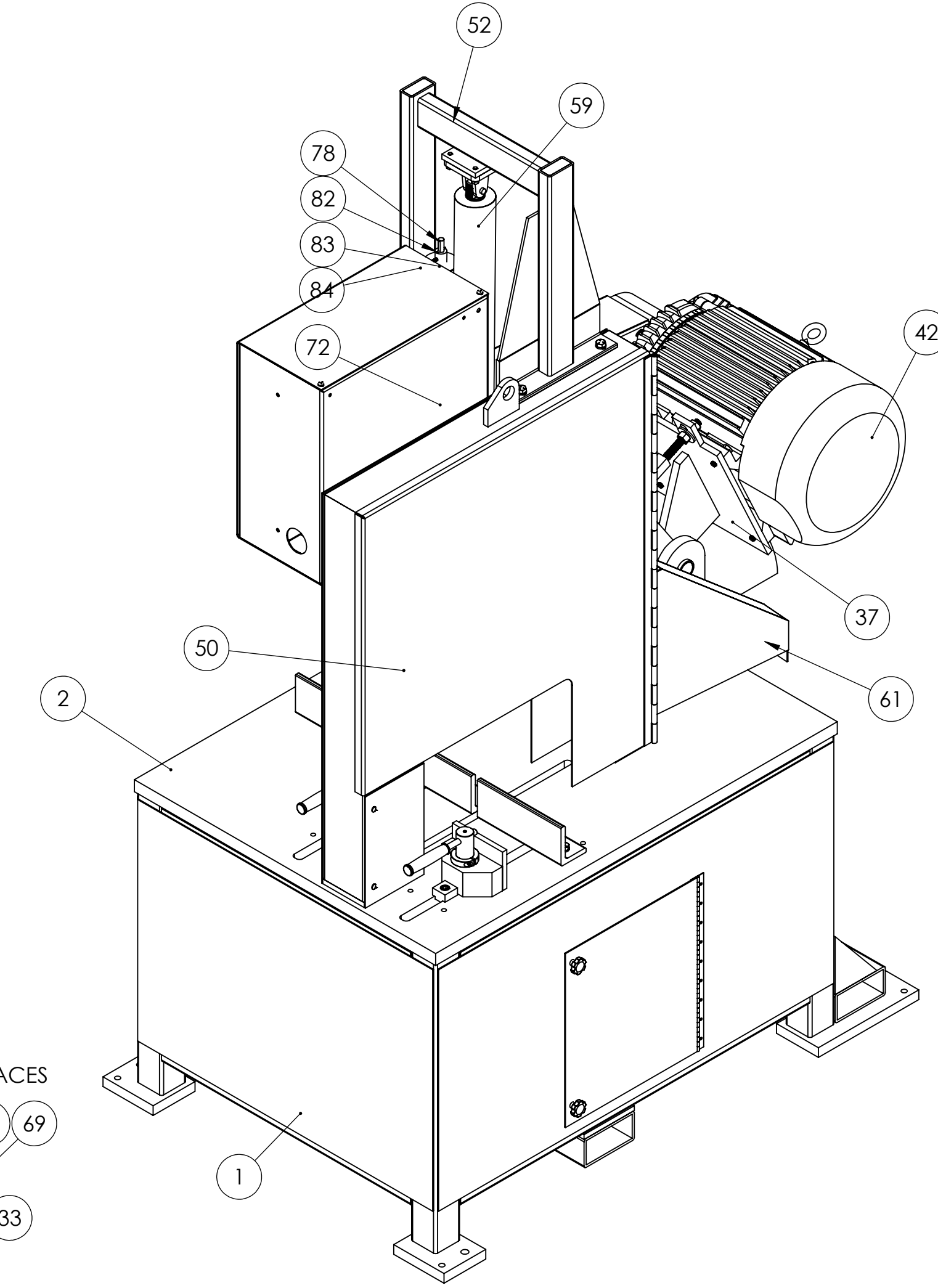
DETAIL F
CYLINDER MOUNTING
BRACKET DETAILS



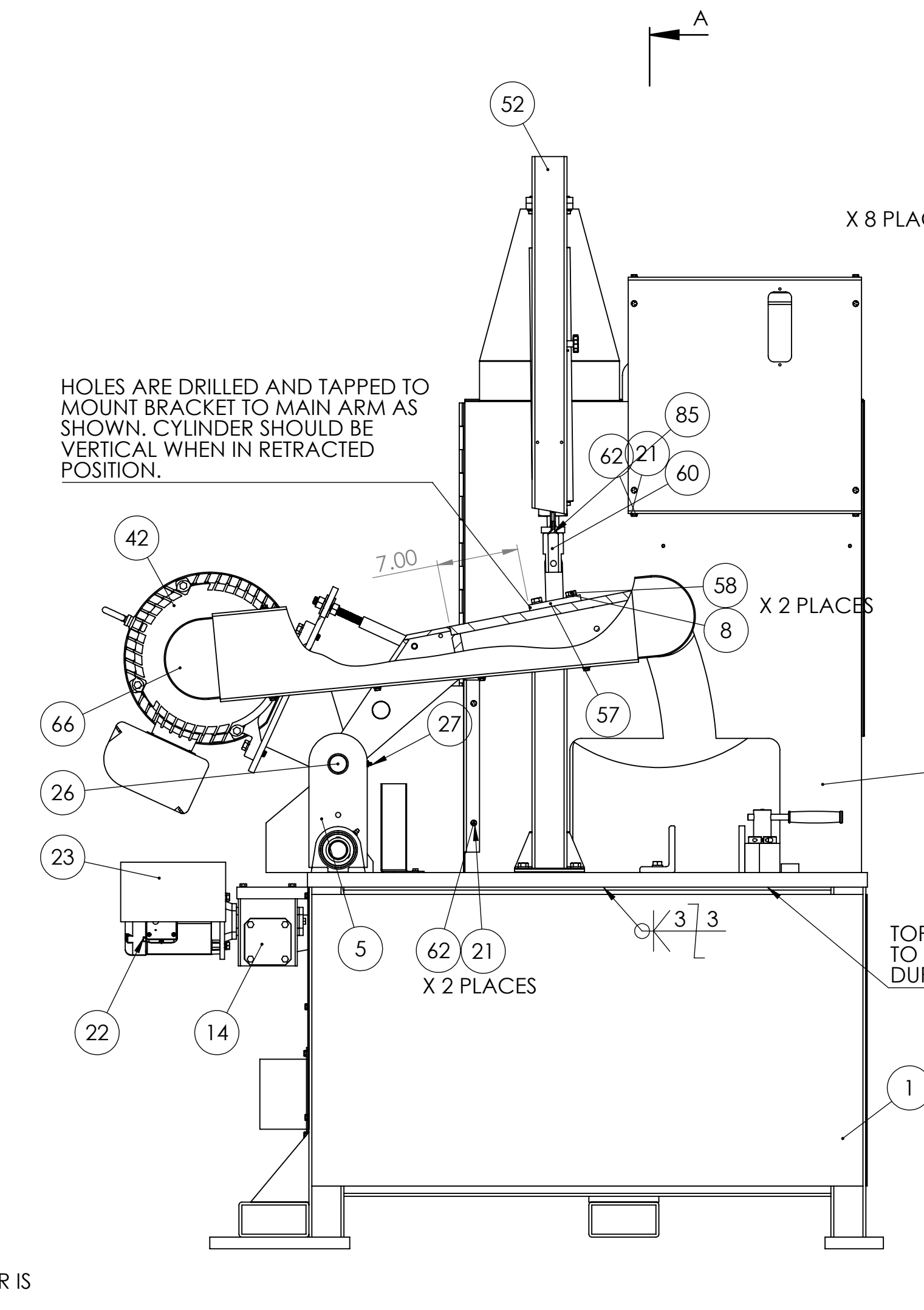
INTERNAL OF BELTS AND PULLEYS
X 3 PLACES



SECTION D-D
INTERNAL VIEW OF
MAIN ARM BEARING HOUSINGS

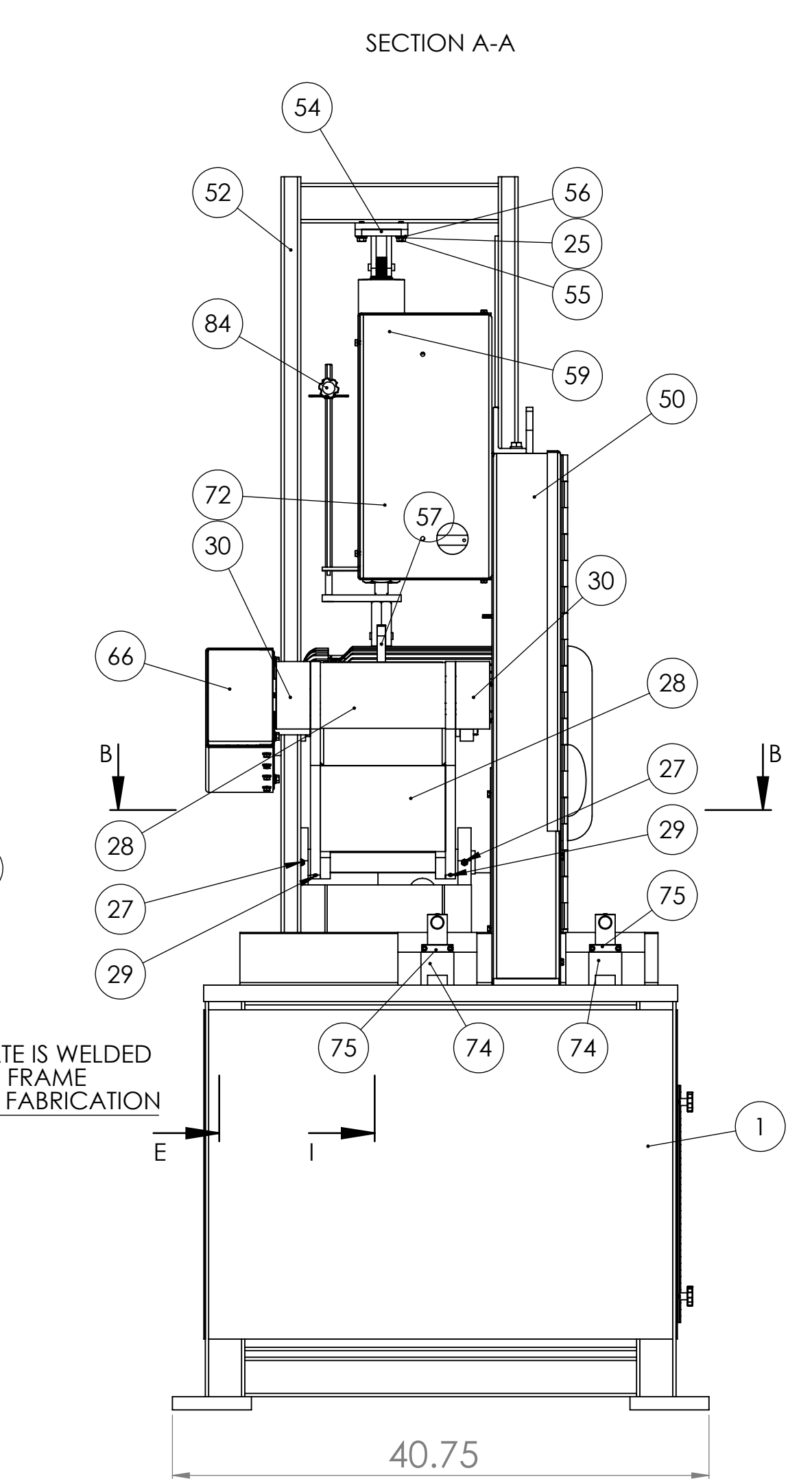


SECTION H-H
INTERIOR OF PHV
CONTROLS BOX

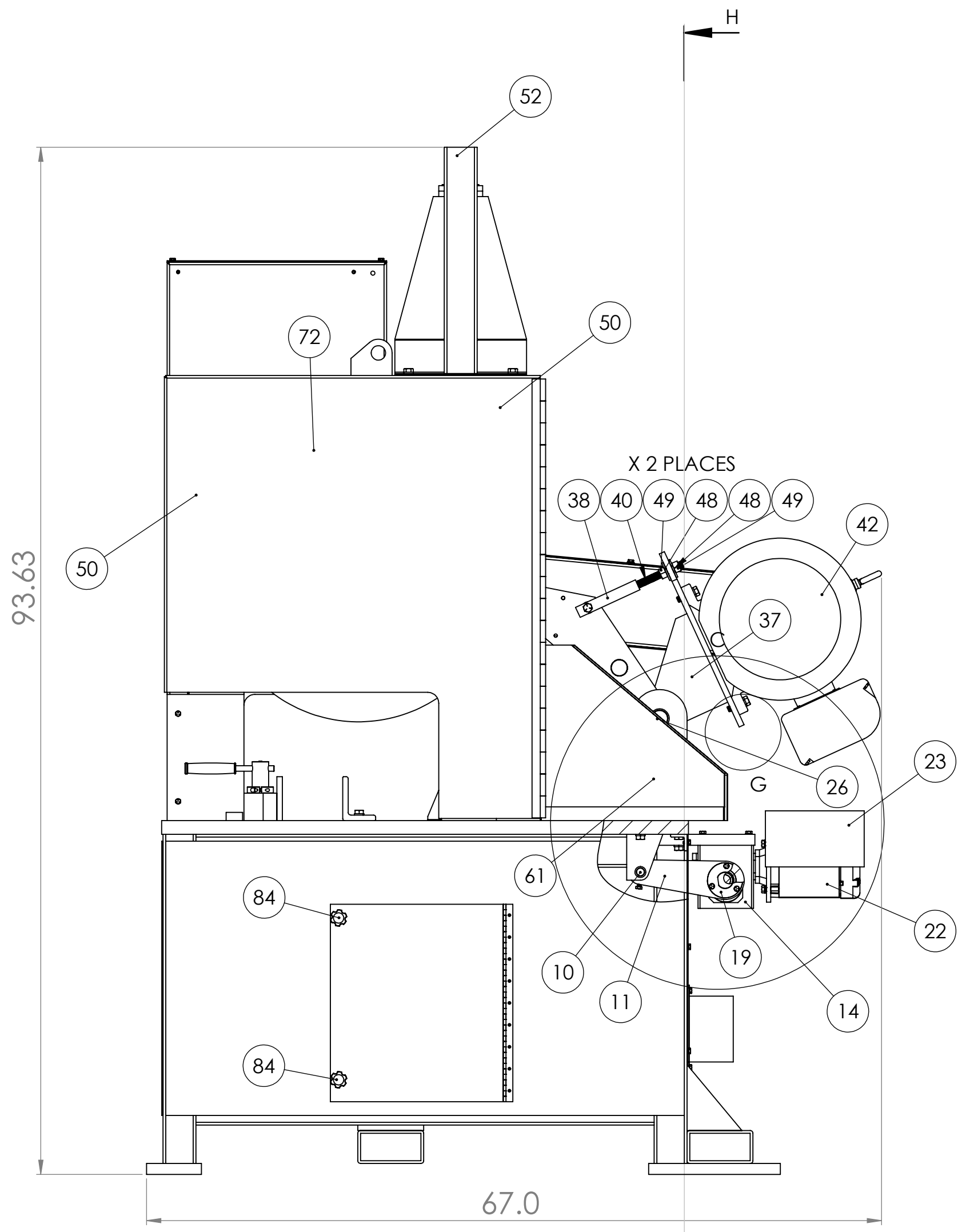


HOLES ARE DRILLED AND TAPPED TO MOUNT BRACKET TO MAIN ARM AS SHOWN. CYLINDER SHOULD BE VERTICAL WHEN IN RETRACTED POSITION.

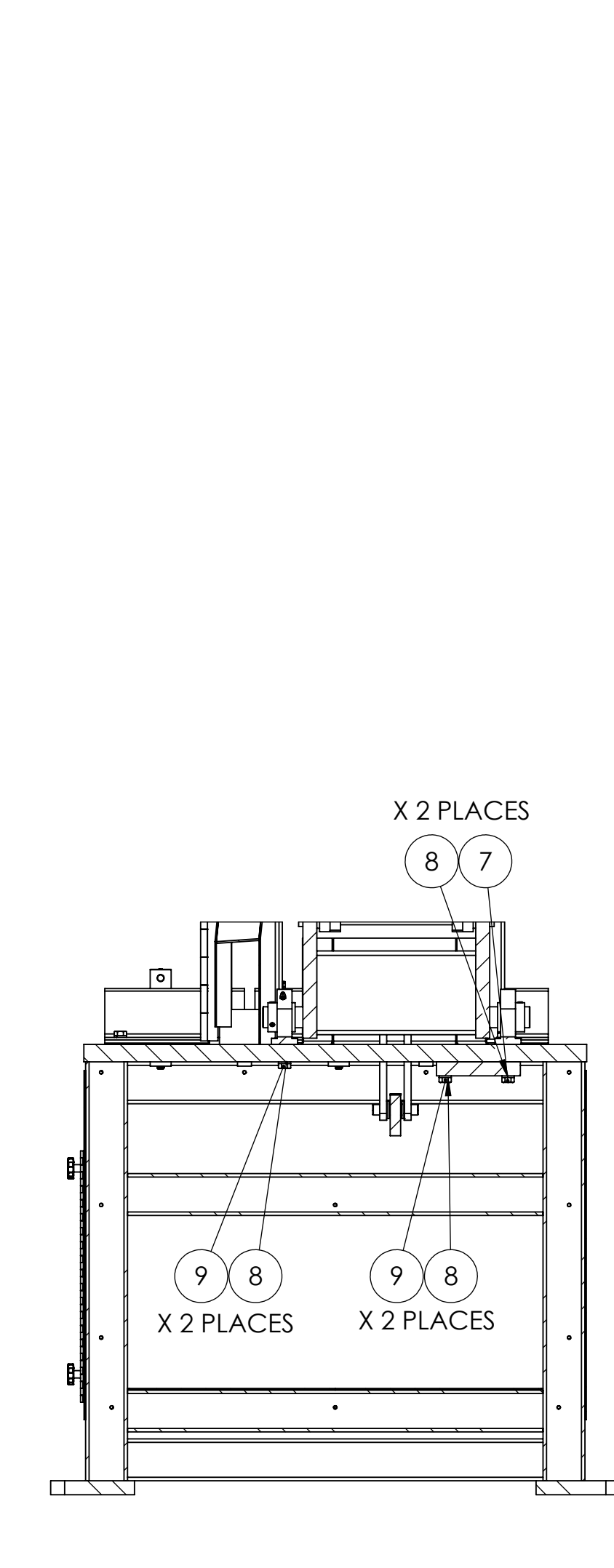
TOP PLATE IS WELDED TO BASE FRAME DURING FABRICATION



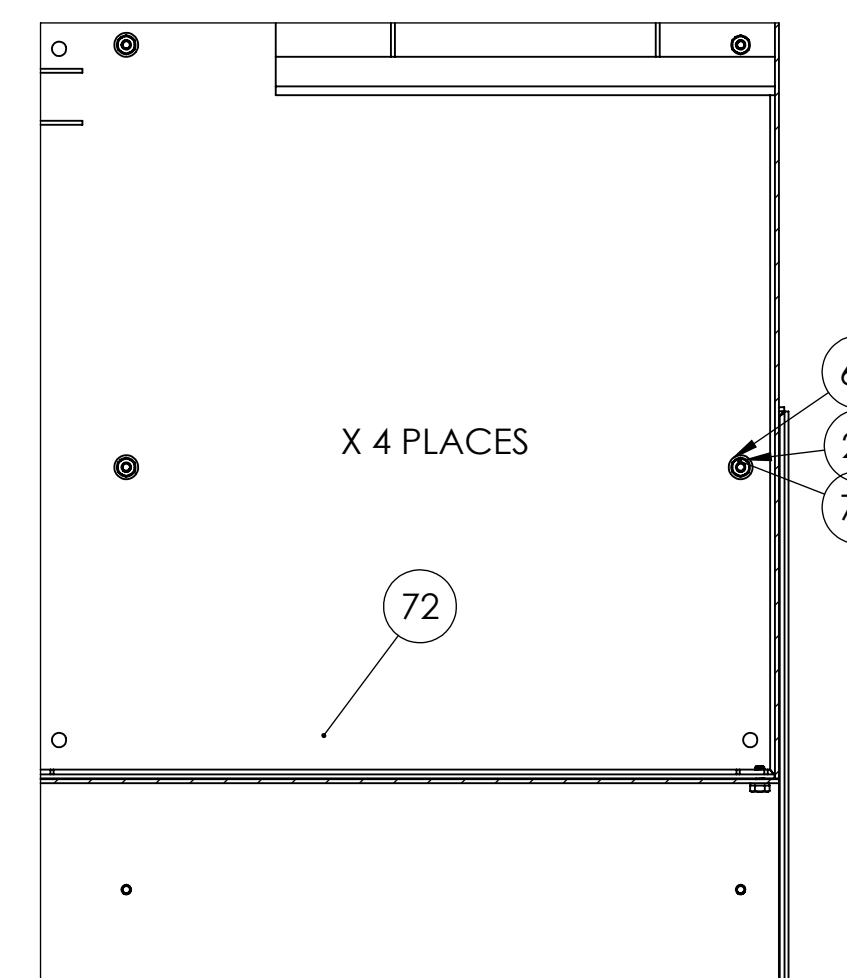
SECTION B-B
SCALE 1 : 10



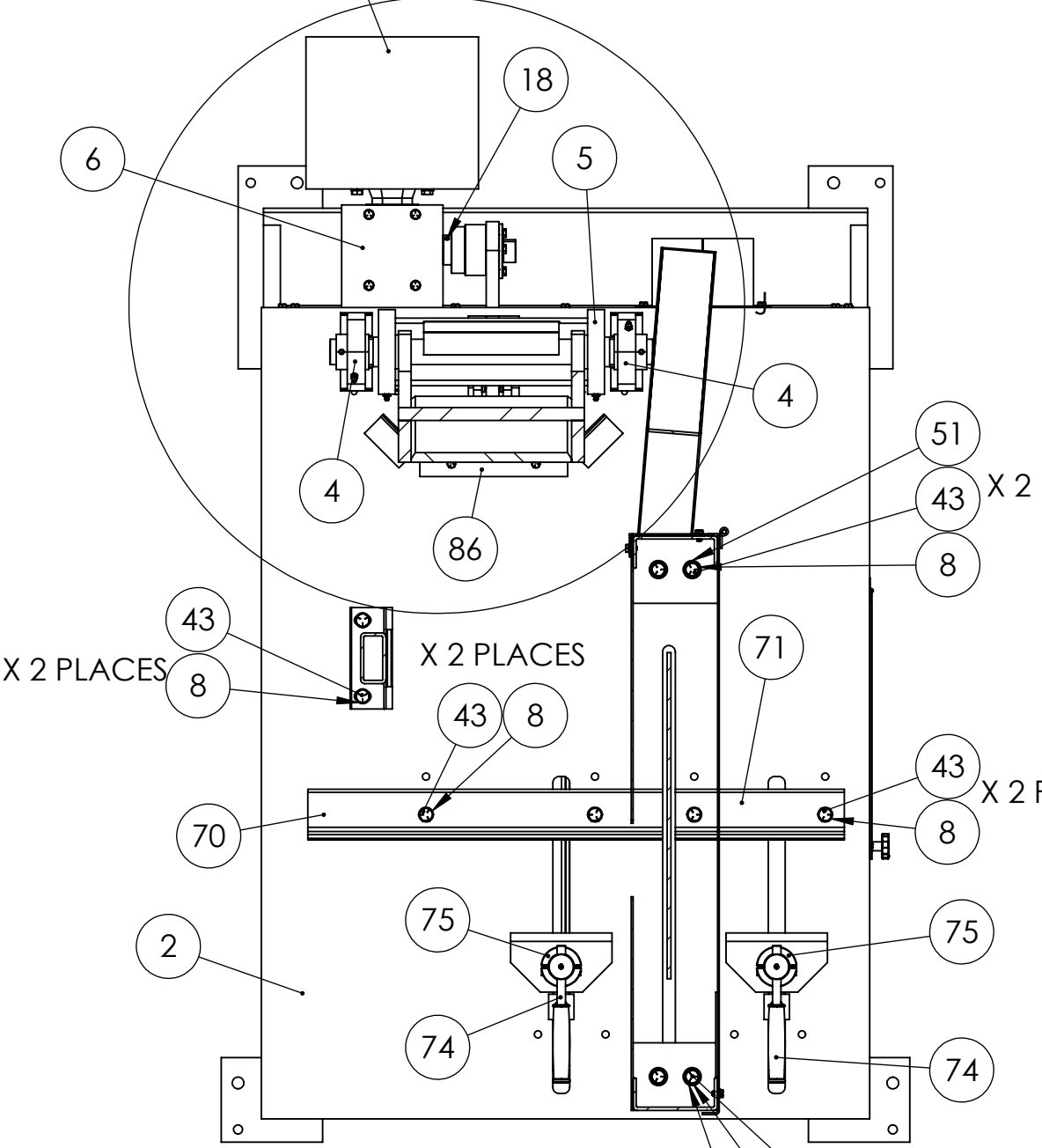
DETAIL C
OSCILLATION DETAILS



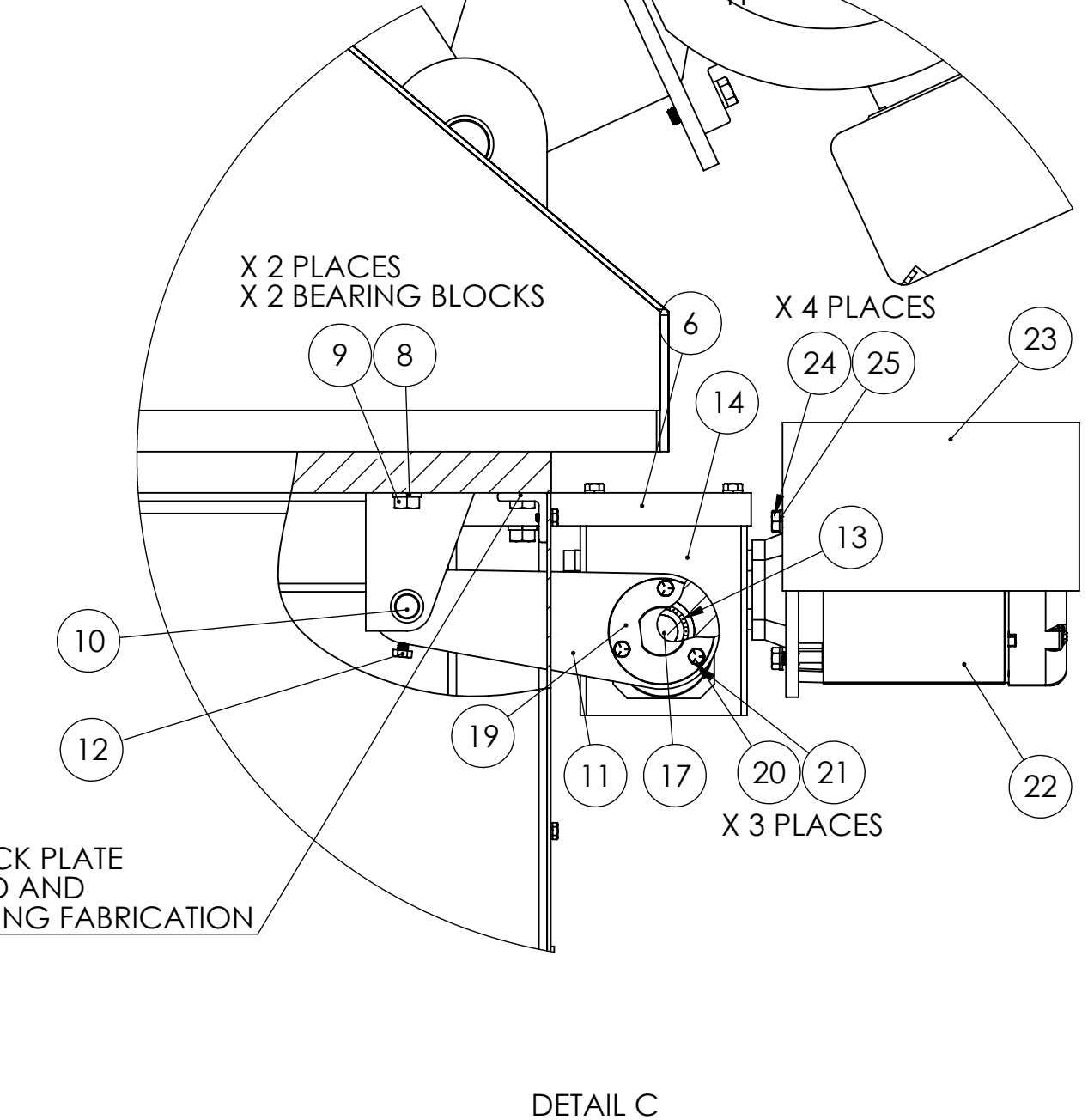
SECTION H-H
SCALE 1 : 10
INTERIOR OF BACK SIDE



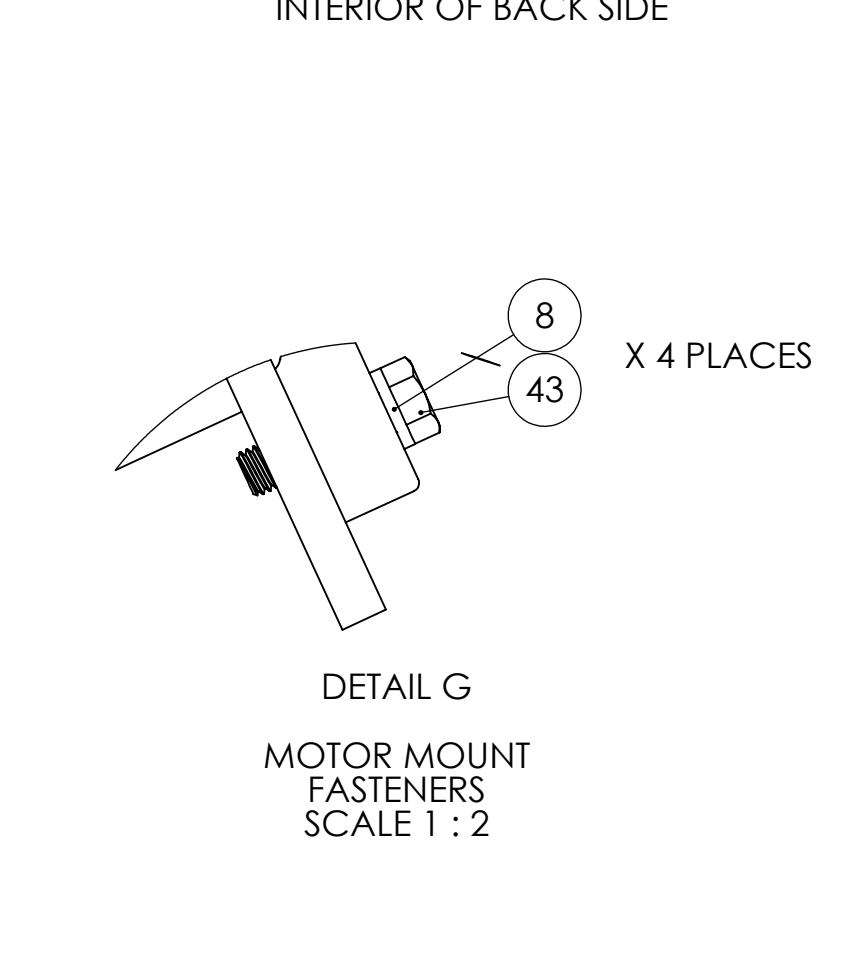
DETAIL J
TOP VIEW OF
OSCILLATION COMPONENTS



SECTION B-B
SCALE 1 : 10



DETAIL C
OSCILLATION DETAILS



DETAIL G
MOTOR MOUNT
FASTENERS
SCALE 1 : 2

ITEM NO.	PART NUMBER	DESCRIPTION	QTY.
1	716-004	K26S STAND ASSEMBLY	1
2	556-118	TOP PLATE FOR K26S AND K30	1
3	716-004BACKPANEL2	BACK ACCESS PANEL FOR K26S WITH OSC STAND ASSEMBLY	1
4	044-041	PILLOW BLOCK BEARING OSCILLATION TRUNNION	2
5	831-035	OSCILLATION TRUNNION	1
6	041-095	MOUNTING PLATE, OSCILLATION GEAR BOX FOR K26-44	1
7	HHC8050048	1/2-13 X 3 HHCS GR8 YEL/ZN	2
8	SLW2050	1/2 SPLIT L/W Z	24
9	HHC8050036	1/2-13 X 2-1/4 HHCS GR8 YEL/ZN	4
10	562-047	OSCILLATION LINK PIN FOR BOTTOM OF K26-44 OSCILLATION TRUNNION	1
11	556-136	CONNECTING ROD PLATE FOR K26-K44 OSCILLATION	1
12	HHC5031016	5/16-18 X 1 HHCS GR5 Z	1
13	044-001	K12 BEARING	1
14	486-033-R	GEAR REDUCER	1
15	HHC5031024	5/16-18 X 1-1/2 HHCS GR5 Z	4
16	SLW2031	5/16 SPLIT L/W Z	8
17	129-009ASSY	CAM ASSEMBLY, OSCILLATION FOR K26 AND LARGER SAWS	1
18	SSKA025006	1/4-20 X 3/8 SOC SET KNURL PT.	1
19	129-009-D	PART D (COVER PLATE) FOR K26 AND LARGER OSCILLATION CAM ASSEMBLY	1
20	HHC5025012	1/4-20 X 3/4 HHCS GR5 Z	5
21	SLW2025	1/4 SPLIT L/W Z	45
22	486-033-M	OSCILLATION MOTOR	1
23	342-145	OSCILLATION MOTOR GUARD FOR K26S	1
24	HHC5037016	3/8-16 X 1 HHCS GR5 Z	4
25	SLW2037	3/8 SPLIT L/W Z	11
26	562-040	OSCILLATION PIN FOR K26-44	1
27	ZERKO12000	1/8-27 X 1 1/16 STRT LUBE FITTING	2
28	002-036	SAW ARM ASSEMBLY FOR K26S (NEW STYLE)	1
29	SSKA031006	5/16-18 X 3/8 SOC SET KNURL PT.	2
30	386-029	BEARING HOUSING FOR K26-44 SAW ARM	2
31	SHCA051024	1/2-20 X 1-1/2 SHCS FOR K26/K30	8
32	044-016	SEALMASTER SPINDLE BEARING FOR K26/K30	2
33	701-108	K26 SPINDLE W/TIGHT FLANGE-25HP+MOTOR WITH 1" ARBOR	1
34	292-013	LOOSE FLANGE FOR K26 AND K20FS SAWS	1
35	537-027	SPINDLE NUT	1
36	SC200D	2" SPLIT COLLAR	2
37	556-098	MOTOR MOUNT PLATE ASSEMBLY FOR K26/K30	1
38	556-098-TENSION POST	TENSION POST, MOTOR MOUNT PLATE ASSEMBLY	2
39	556-098-A	SPACER FOR MOTOR TENSION POST	2
40	556-098-B	6 INCHES OF 5/8-11 THREADED ROD	2
41	HHC5050040	1/2-13 X 2-1/2 HHCS GR5 Z	2
42	486-044	MOTOR	1
43	HHC5050028	1/2-13 X 1-3/4 HHCS GR5 Z	14
44	560-106	BROWNING SHEAVE	2
45	049-118	SPLIT TAPER BUSHING	1
46	049-119	SPLIT TAPER BUSHING	1
47	051-031	HY-T WEDGE BELT	3
48	UFW2062	5/8 USS F/W Z	4
49	FHN5062	5/8-11 FHN GR5 Z	4
50	342-050	GUARD, WHEEL FOR K26 SAWS W OSC-30HP+	1
51	UFW2050	1/2 USS F/W Z	4
52	291-057	FRAME, FOR K26 PHV	1
53	HHC5050016	1/2-13 X 1 HHCS GR5 Z	2
54	1-34-65	SWIVEL BRACKET & PIN FOR CYLINDERS	1
55	HHC5037020	3/8-16 X 1-1/4 HHCS GR5 Z	4
56	UFW2037	3/8 USS F/W Z	7
57	041-116	T BRACKET, FOR K26S PHV LOWER CYLINDER MOUNT	1
58	HHC5050020	1/2-13 X 1-1/4 HHCS GR5 Z	2
59	131-009	CYLINDER FOR PH-26 AND PH30	1
60	1-35-65	ROD CLEVIS AND PIN FOR CYLINDER	1
61	342-141	GUARD, SPARK DEFLECTOR FOR K26 WHEEL GUARD	1
62	HHC5025008	1/4-20 X 1/2 HHCS GR5 Z	36
63	699-051	SPACER, FOR K26S BELT GUARD	3
64	342-142	GUARD, INNER BELT FOR K26S SAWS	1
65	HHC5037056	3/8-16 X 3-1/2 HHCS GR5 Z	3
66	342-143	GUARD, OUTER BELT FOR K26S SAWS	1
67	UFW2025	1/4 USS F/W Z	12
68	HHC5031008	5/16-18 X 1/2 HHCS GR5 Z	4
69	UFW2031	5/16 USS F/W Z	4
70	293-005	FENCE, LEFT HAND FOR K26 SAWS	1
71	293-006	FENCE, RIGHT HAND FOR K26 SAWS	1
72	PH-26-CONTROLSBOX	PHV CONTROLS BOX, FOR PH-26	1
73	FHN5025	1/4-20 FHN GR5 Z	4
74	CV-26	CAM VISE ASSEMBLY	2
75	SC150D	1-1/2" 2PC SPLIT COLLAR	2
76	041-043	CLEVIS MOUNT FOR K26 CYLINDER DOWN STOP	1
77	041-044	CYLINDER MOUNT FOR K26 CYLINDER DOWN STOP	1
78	041-045	ROD FOR K26 CYLINDER DOWN STOP	1
79	041-046	STOPPER FOR K26 CYLINDER DOWN STOP	1
80	131-009SPACER	SPACER FOR K26 CYLINDER	1
81	FJN5163	1-5/8-12 FH JAM NUT GR5	1
82	ROLA012016	1/8 X 1 ROLL PIN	1
83	041-047	SWITCH TRIP FOR K26 CYLINDER DOWN STOP	1
84	441-015	1/4 THUMBSCREW 1-1/2 DIA	3
85	FSCA037016	3/8-16 X 1 FSHCS	1
86	342-144	OSCILLATION FRONT GUARD FOR K26S	1
87	342-133	6 INCH VACUUM CHUTE	1
88	26 INCH WHEEL		1

UNLESS OTHERWISE SPECIFIED:
DIMENSIONS ARE IN INCHES
TOLERANCES:
FRACTIONS: ± .005
DECIMALS: ± .005
THREE PLACE DECIMAL: ± .001
FOUR PLACE DECIMAL: ± .0005
FIVE PLACE DECIMAL: ± .0001

PROPRIETARY AND CONFIDENTIAL
THIS DRAWING IS THE PROPERTY OF KALAMAZOR
REPRODUCTION IN WHOLE OR IN PART WITHOUT THE WRITTEN PERMISSION OF KALAMAZOR IS PROHIBITED.

DATE: 11/15/11
DRAWN BY: J. BEND
CHECKED BY: J. BEND
ENG APPR: J. BEND
MFG APPR: J. BEND

INTERFERENCE CHECKED: J. BEND
TOLERANCES: J. BEND

COMMENTS:

KALAMAZOR
K26S WITH OSCILLATION
DWG. NO. E
K26S-W OSC
SCALE: 1:5 WEIGHT: SHEET 1 OF 1