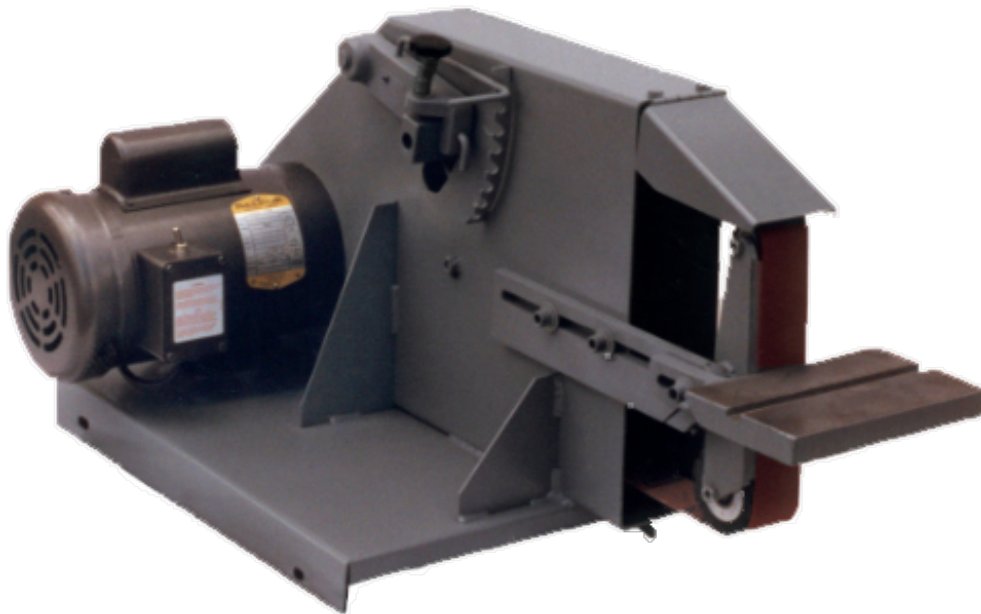


# INSTRUCTION MANUAL S272 BELT GRINDER



**KI** *KALAMAZOO*  
INDUSTRIES, INC.

6856 East K Avenue

Kalamazoo, MI 49049

Phone: (269) 382-2050

Fax: (269) 382-0790

[www.kalamazooind.com](http://www.kalamazooind.com)



**MADE IN USA**

## WARRANTY

All products are guaranteed for a period of one year to the original purchaser, against defects in material work workmanship, under normal use

Electric motors are warranted by the manufacturer and will be repaired by the nearest repair station or replaced. Defective motors are not be returned to Kalamazoo Industries. Please call for instructions (269) 382-2050. Written authorization must be obtained before returning merchandise.

## RETURN POLICY

- Authorization must be obtained before returning merchandise. Please call our Customer Service Department to receive a return authorization number (269) 382-2050.
- Please include with your return a copy of your invoice or packing slip.
- All returns will be subject to a 10% restocking fee.
- Customer is responsible for paying for return freight.
- No returns will be accepted after one year of invoice date.

## BELT GRINDER SAFETY

- READ THE OPERATING INSTRUCTIONS BEFORE RUNNING MACHINE.
- ALWAYS WEAR SAFETY GLASSES OR A FULL FACE SHIELD FOR PROTECTION.
- KEEP HANDS CLEAR OF THE SANDING AREA.
- NEVER WEAR GLOVES OR LOOSE FITTING CLOTHES WHEN OPERATING THIS MACHINE.
- ALWAYS KEEP HAIR TIED BACK AND COVERED.
- LET MACHINE ROTATION COME TO A FULL STOP BEFORE CHANGING BELT.
- KEEP SAFETY GUARDS IN PLACE. DO NOT ALTER GUARDS OR MACHINE IN ANY WAY. ANY ALTERATIONS TO GUARDS AND MACHINE COULD CAUSE SERIOUS INJURY AND WILL VOID MACHINE WARRANTY.
- ALL BELT SANDERS SHOULD BE OPERATED IN A WELL-VENTILATED AREA. THE DUST CREATED WHEN SOME MATERIALS ARE SANDED CAN BE HARMFUL. DUST MASKS/RESPIRATORS ARE RECOMMENDED AS A PRACTICAL MEANS OF MINIMIZING DUST INHALATION. FUMES FROM OTHER SOURCES CAN ALSO CAUSE FIRES WHEN IN CONTACT WITH SANDING SPARKS.
- NEVER MIX MATERIALS.
- SPARKS CREATED BY SANDING SHOULD BE DIRECTED DOWNWARD AND AWAY FROM THE FACE AND BODY. DO NOT GRIND NEAR FLAMMABLE MATERIALS.
- ELECTRICAL SANDING MACHINES ARE NOT INTENDED FOR USE IN OR NEAR WATER. THIS INCLUDES AN OPERATOR STANDING ON A WET FLOOR OR WORKING AROUND CONTAINERS OF WATER OR OTHER CONDUCTIVE LIQUIDS.

### **KALAMAZOO INDUSTRIES, INC.**

6856 E K AVENUE

KALAMAZOO, MI 49048

PHONE: (269) 382-2050

FAX: (269) 382-0790

WWW.KALAMAZOOIND.COM



# BASIC S272 BELT GRINDER OPERATION

## INSPECTION

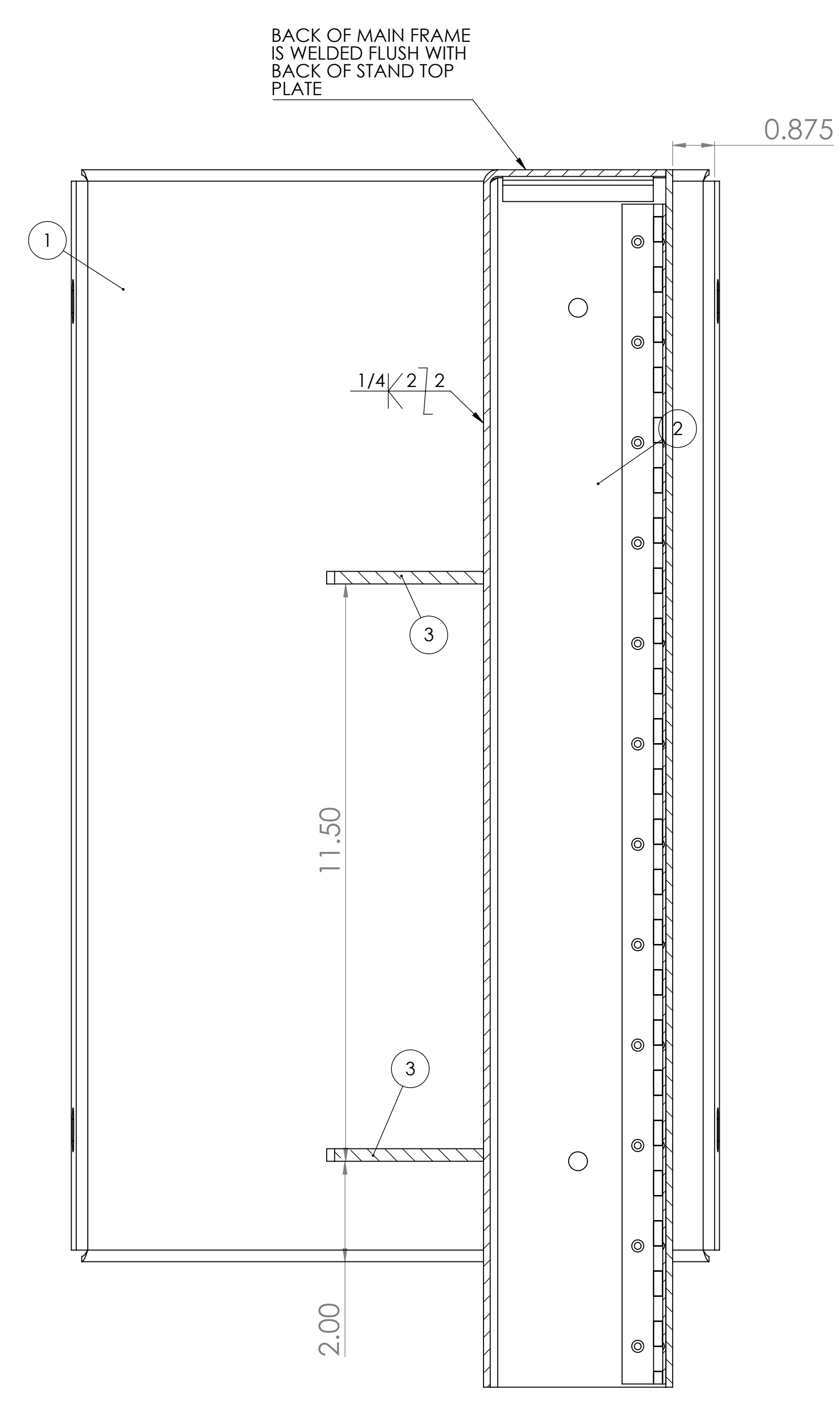
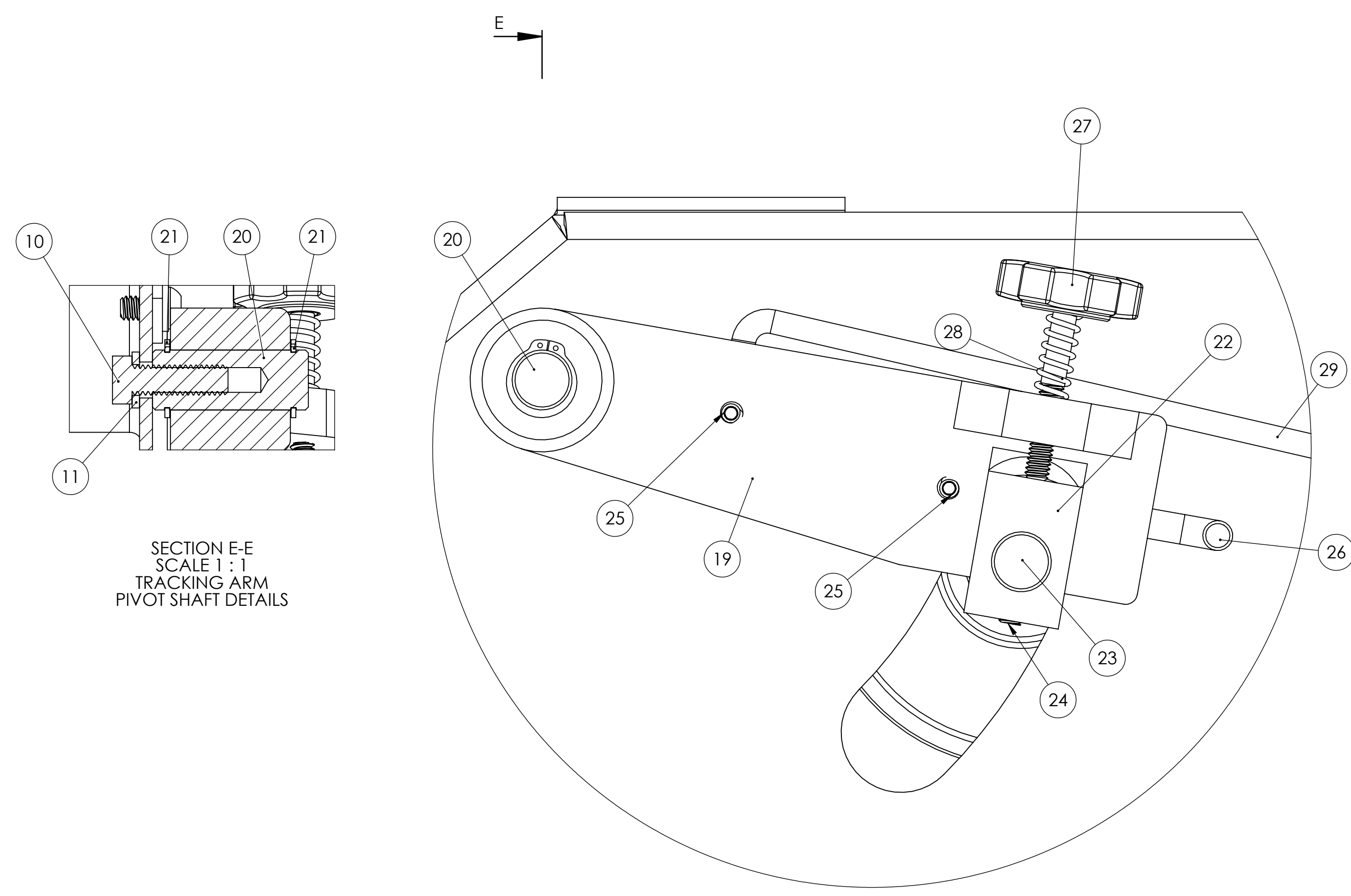
If these goods are damaged in transit, the **DELIVERING TRANSPORTATION COMPANY** is required by law to make notation of damages on the freight bill. If in your opinion, there may be concealed damage, they are required to make an inspection after goods are unpacked. Transportation rates are made in proportion to damage. Therefore, the carrier and **NOT** the shipper should be charged with any loss or damage. Any claim should be filed with the delivering Transportation Company. **PLEASE DO NOT RETURN GOODS TO US WITHOUT OUR RGA NUMBER AND SHIPPING INSTRUCTIONS.**

## OPERATING INSTRUCTIONS

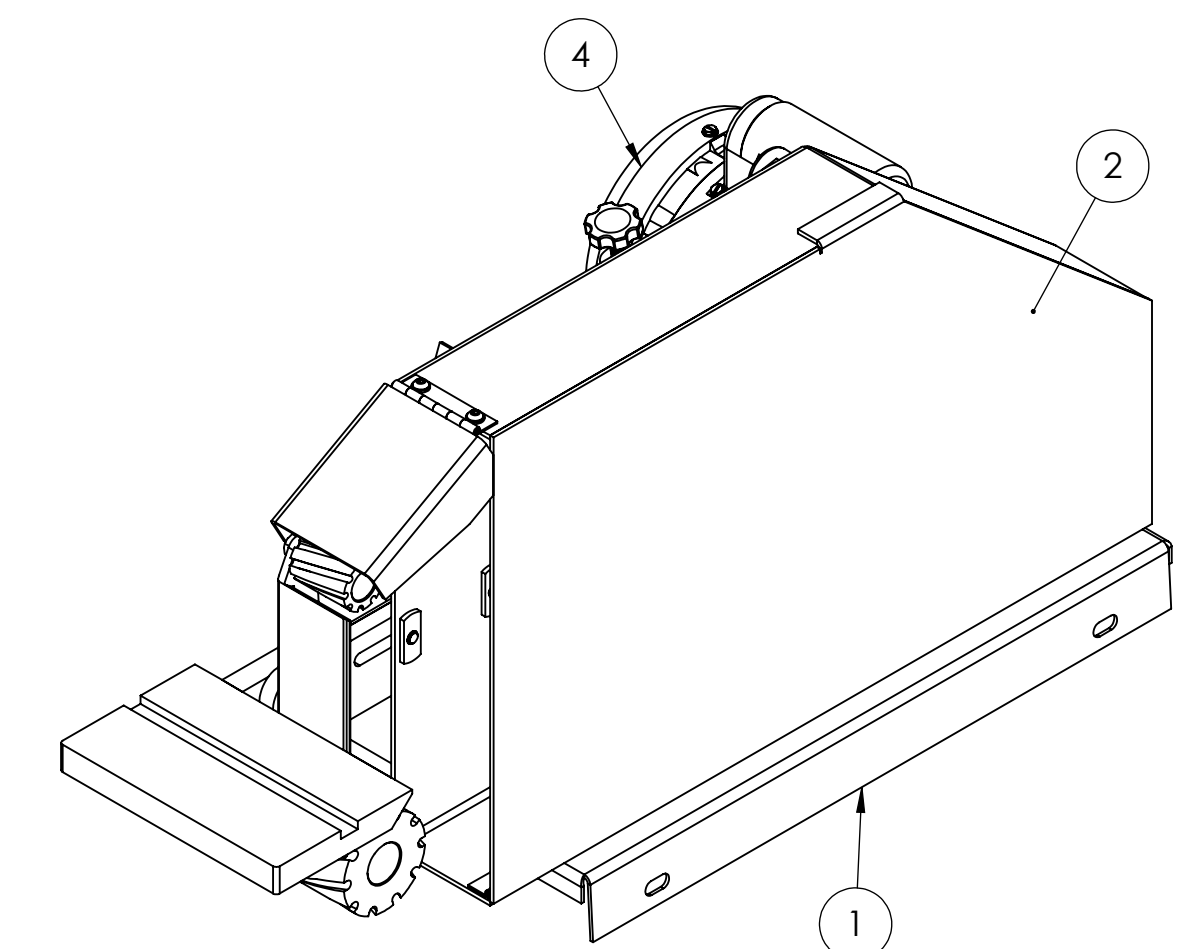
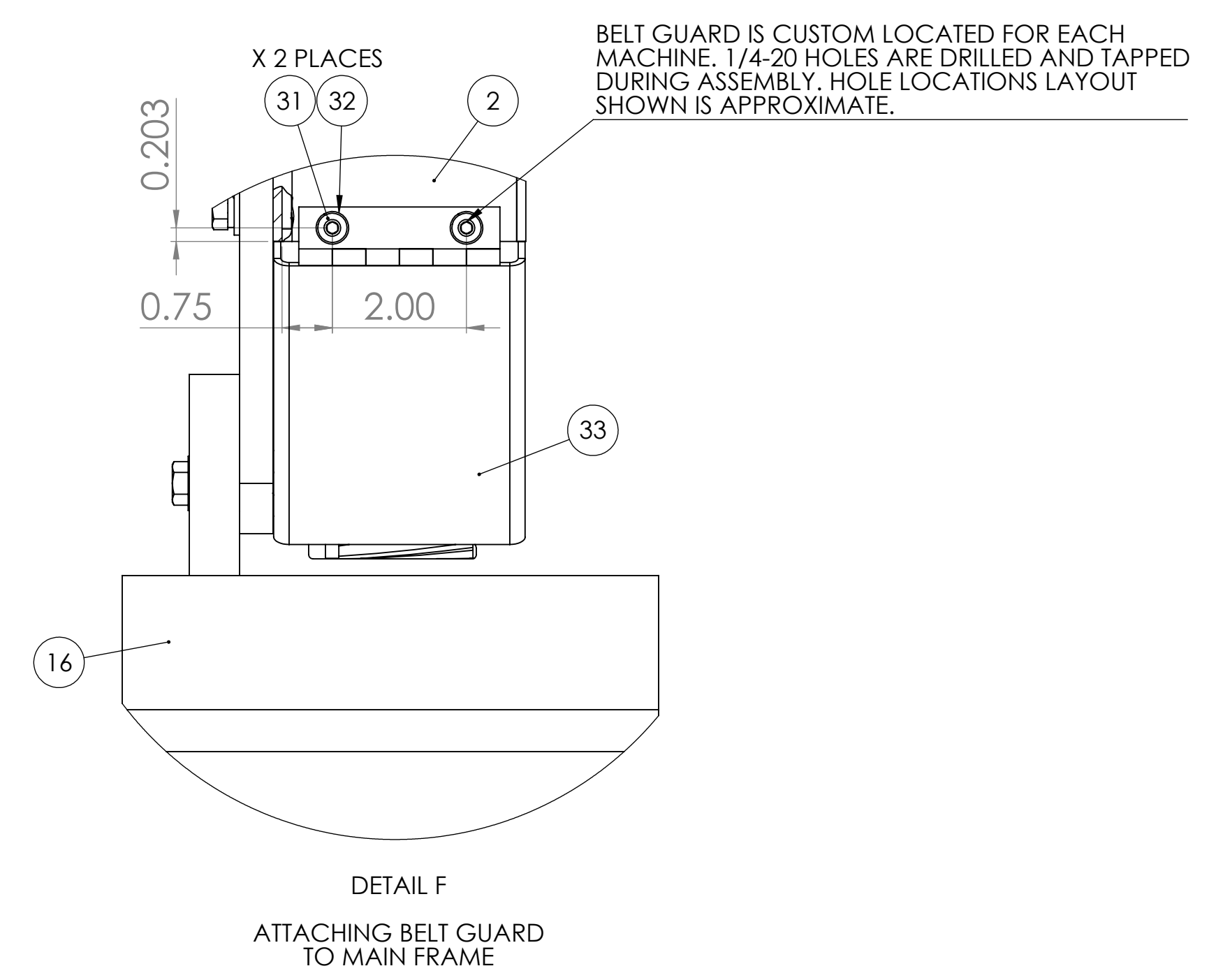
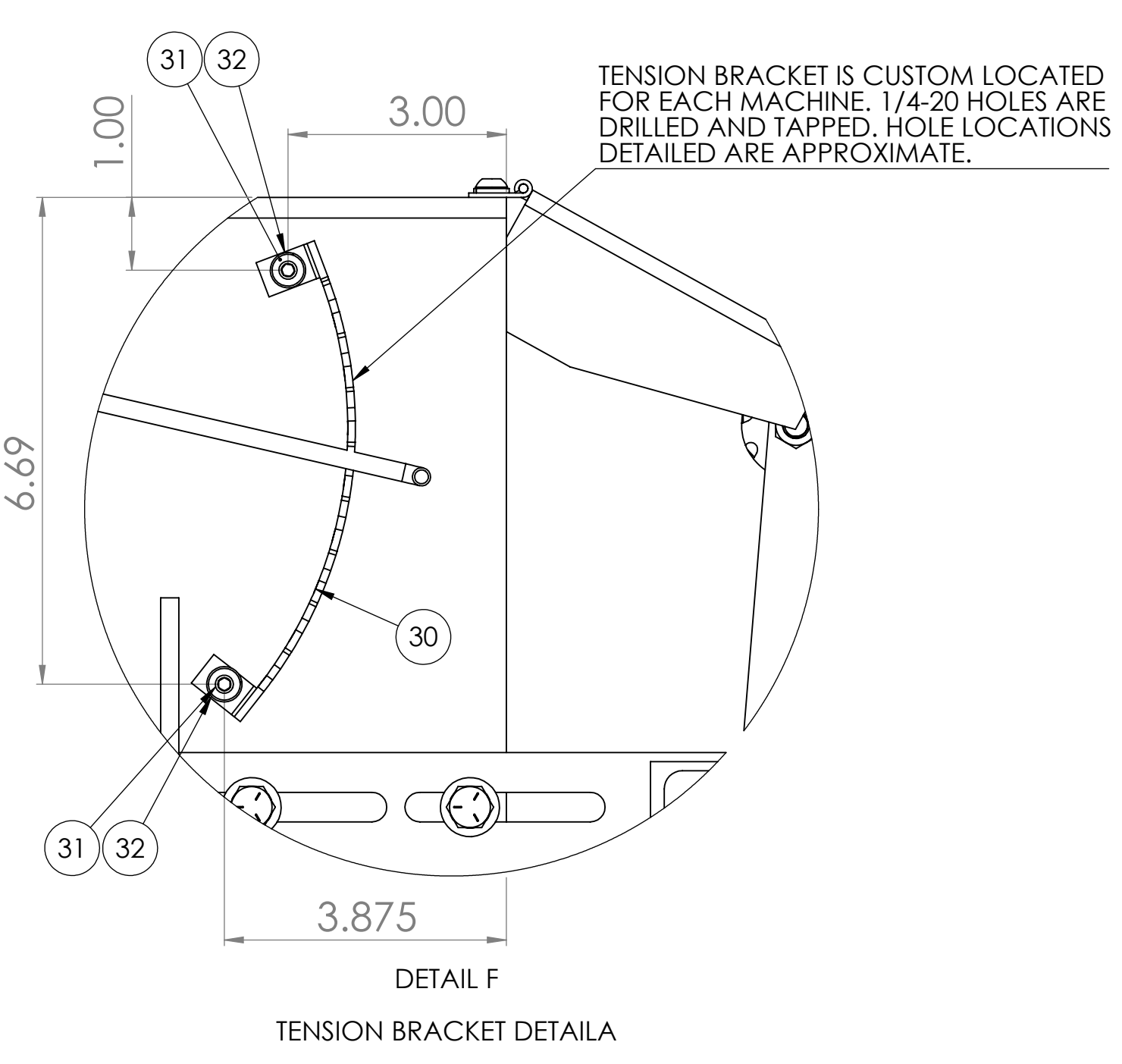
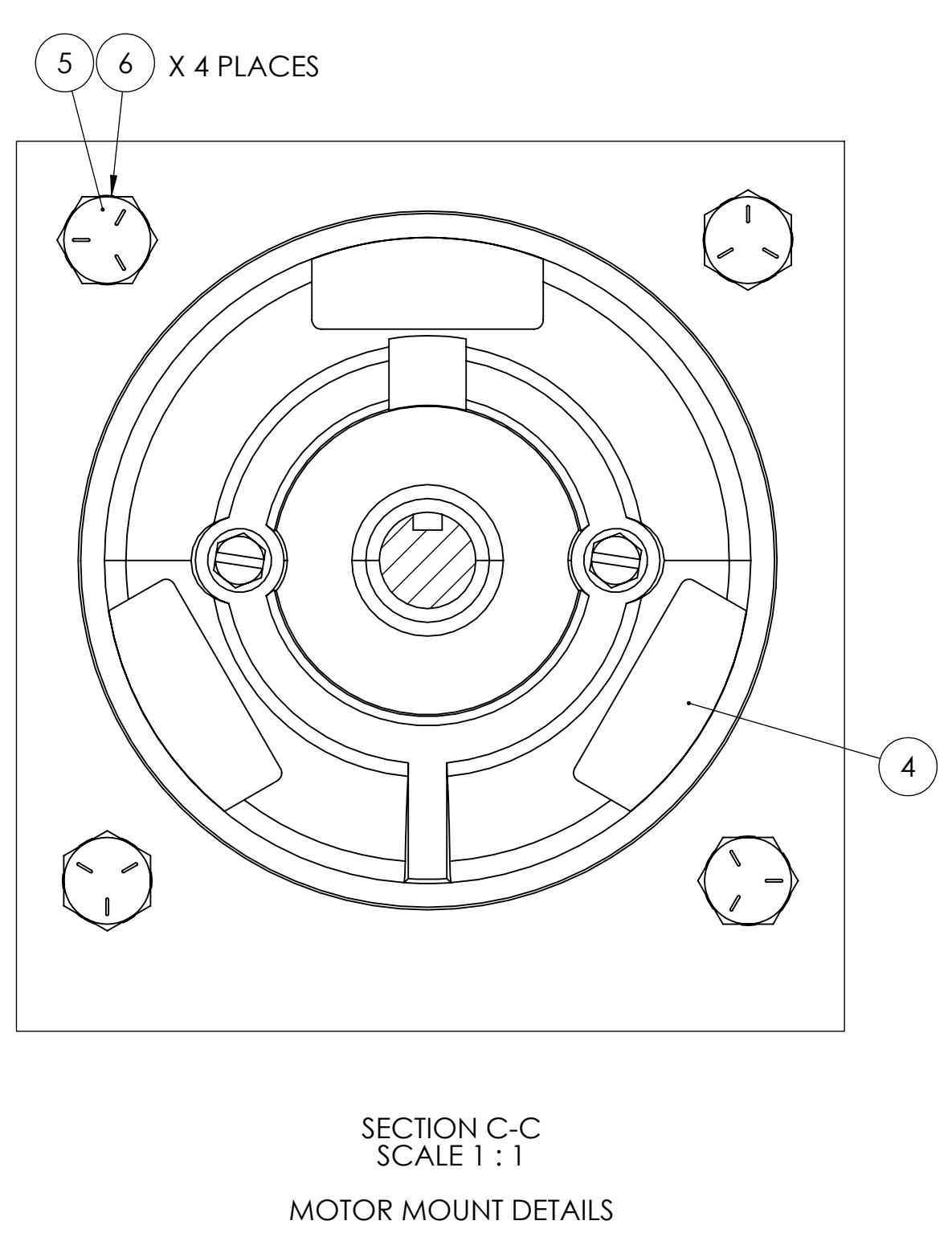
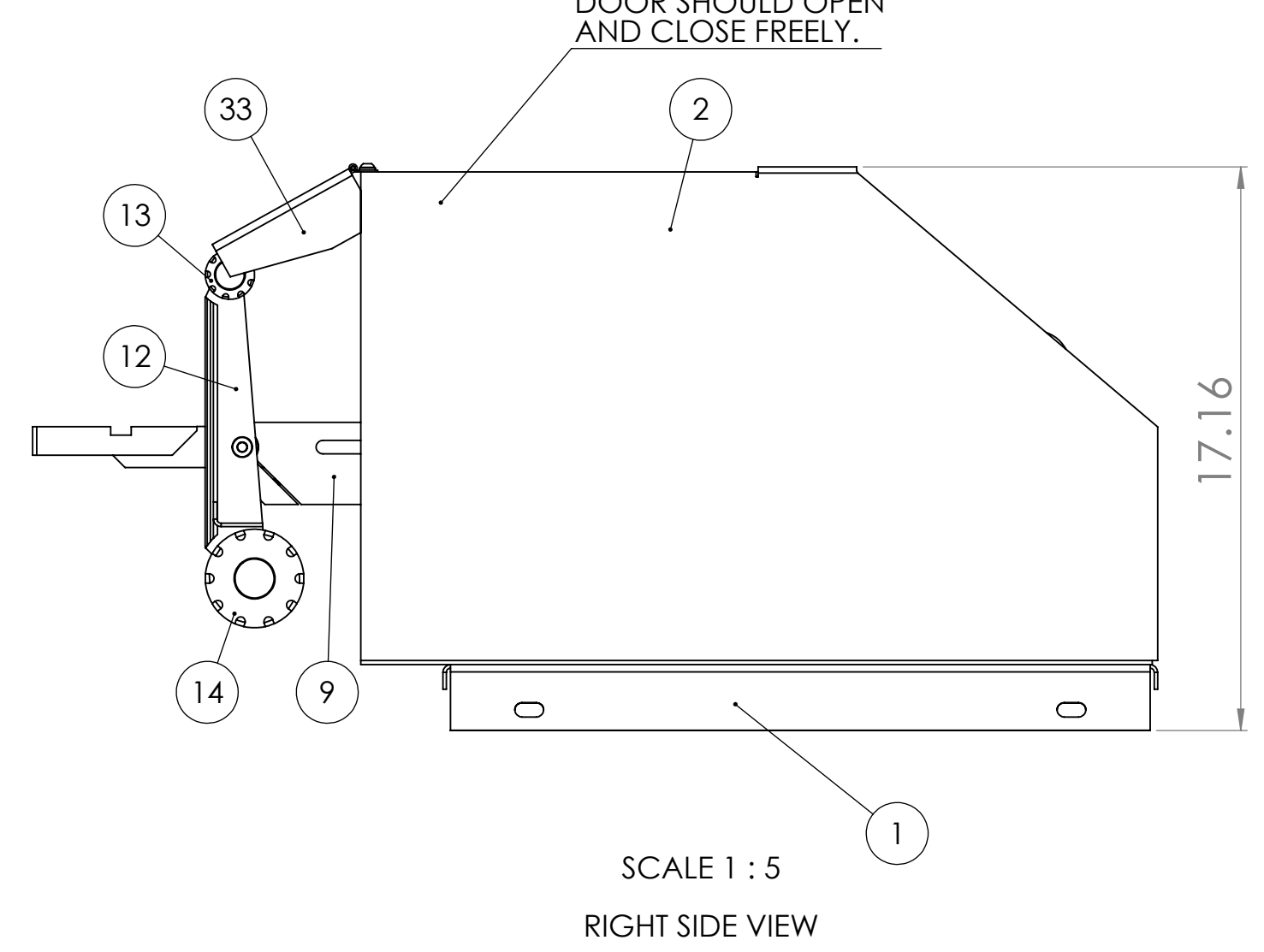
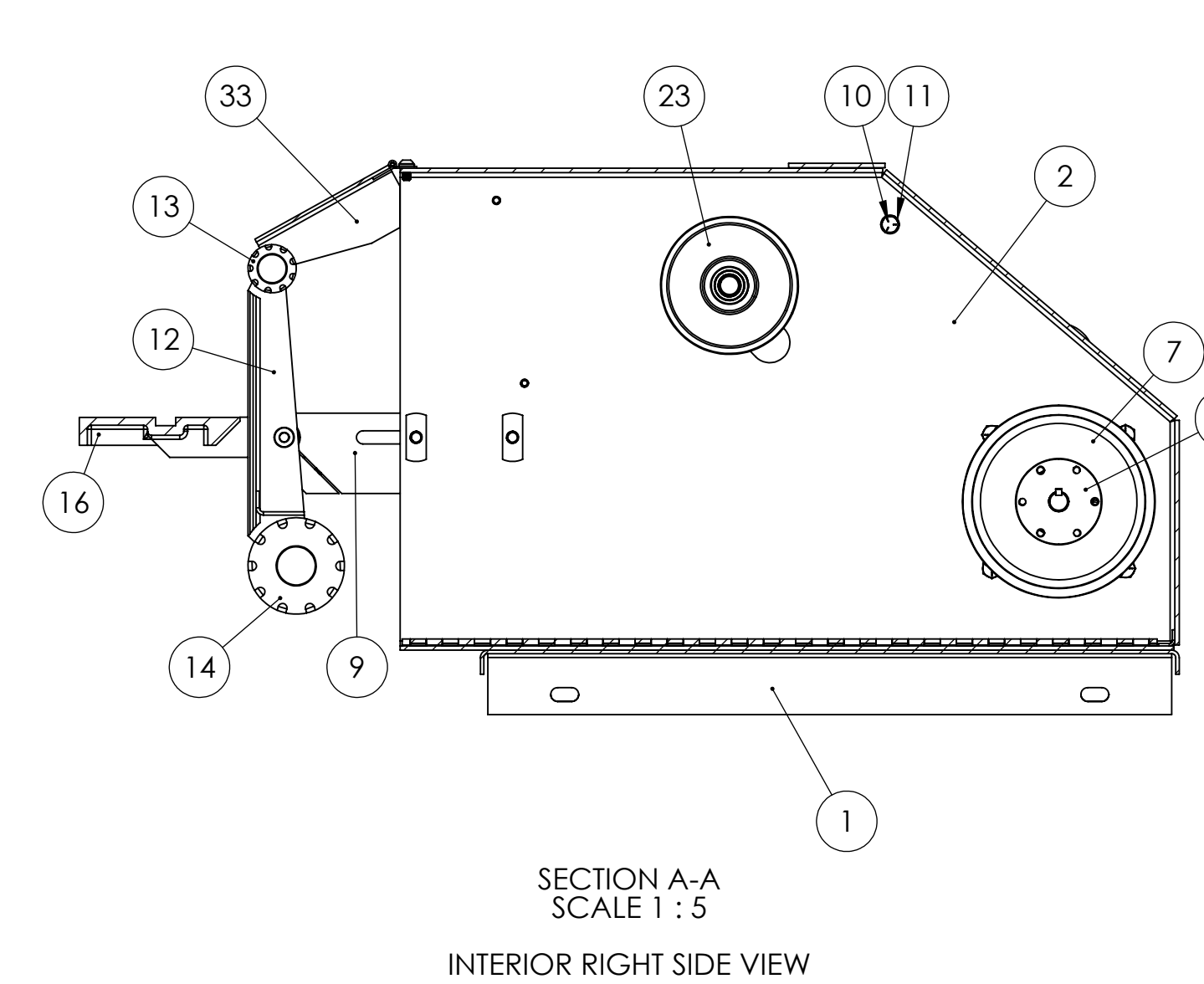
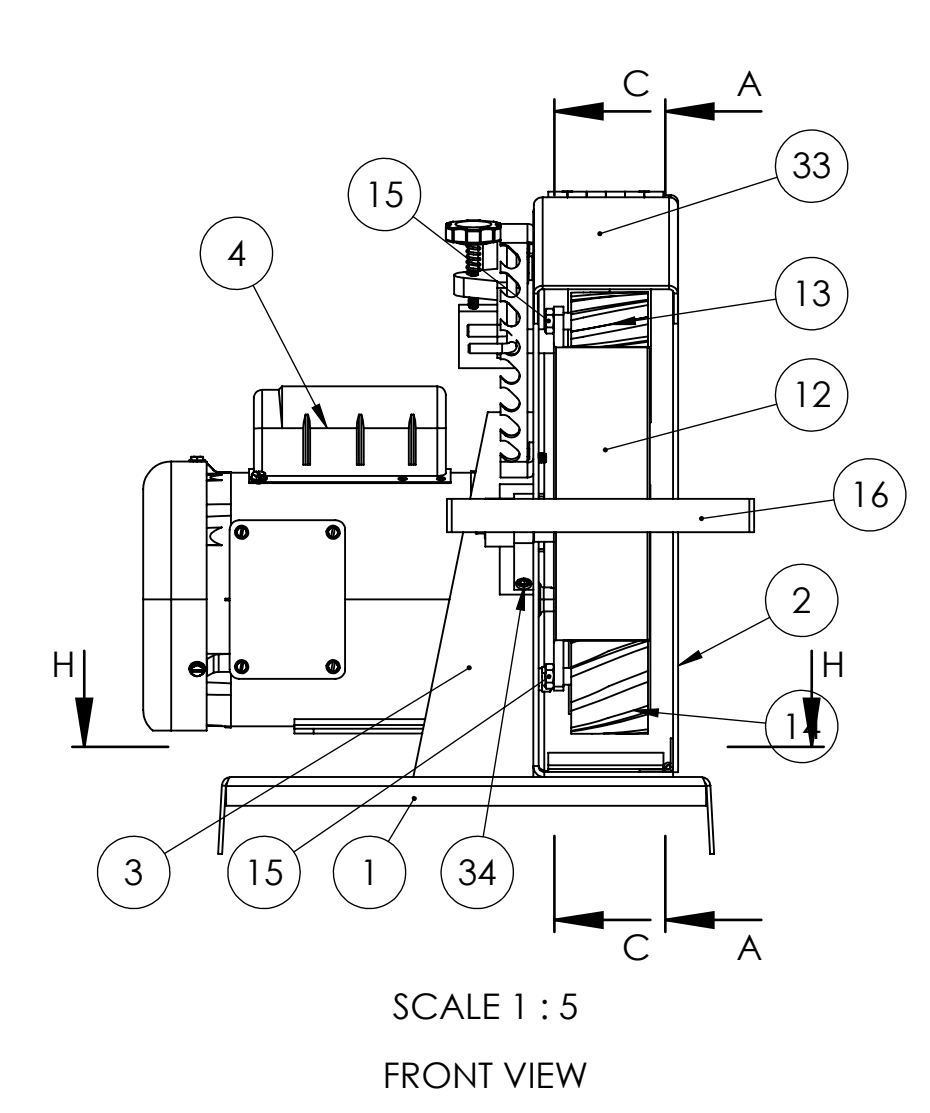
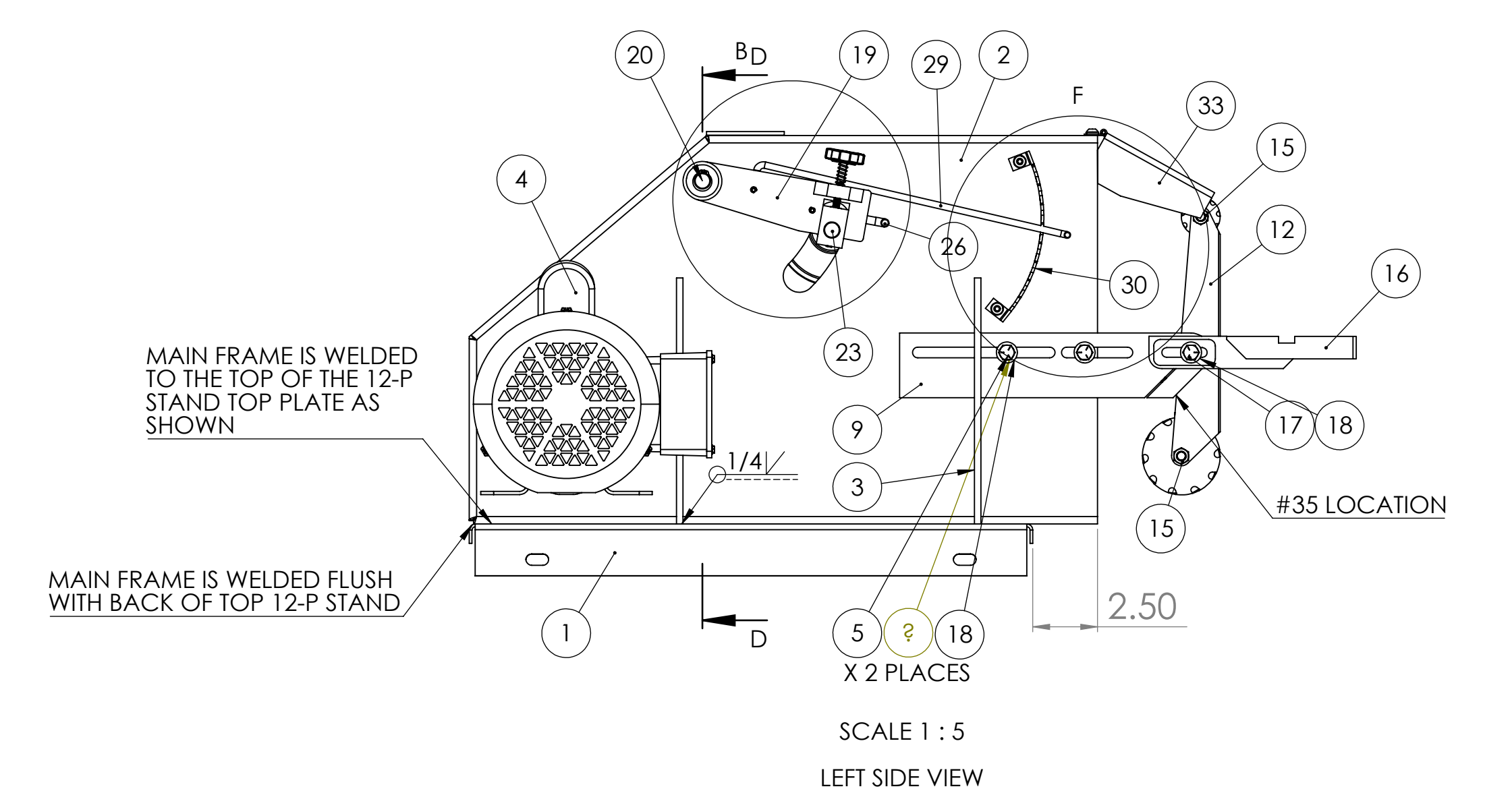
1. **Electrical:** Remove from crate and be sure to check that incoming voltage matches units voltage. If your not sure how to wire your grinder to the incoming power hire an electrical. **If the machine wired incorrectly and the electrical components are destroyed the warranty is voided.**
2. **Belt changing:** Turn off machine power, open the side door of the machine to expose the sanding belt. Release lever (#29) from rack (#30). This releases belt tension. Remove sanding belt and replace with a new belt. Re-tension the sanding belt by pulling up on lever (#29) and locking it into the rack (#30). Only moderate pressure is needed.
3. **Belt tracking:** Track or “center on the pulleys” the sanding belt with knob (#28). This moves the sanding belt left or right. The belt should stay centered or “tracked”.
4. **Platen:** S272 has two serrated 70 duro contact wheels on either end of the platen (#13). You can position the platen and contact wheels in any configuration needed. Loosen the center bolt on the platen (#13) and rotate to the position desired. Use either contact wheel or just the flat platen area. The adjusting bar (#9) may need to be loosened and pulled tight to get correct belt tension for the platen position. Re-tighten all belts and cap screws to maintain platen/contact wheel position.
5. **Work table:** When using the work table keep the table within 1/8” of the sanding belt to prevent “pinching” the work piece between the belt and the table.
6. **Belt guard:** Keep the belt guard (#34) down.
7. **Safety:** Always follow correct safety procedures. **SEE SAFETY SHEET.**

## Trouble shooting/tracking problems

1. Drive pulley lost its crown (curvature of pulley).
2. Sanding belts are not spliced/glued correctly.



ITEM NO.	PART NUMBER	DESCRIPTION	QTY.
1	829-031	TOP, 12-P STAND	1
2	291-036	FRAME FOR S272 SANDERS	1
3	061-011	BRACE, FOR S272 FRAME	2
4	486-002	1 HP MOTOR FOR 2FSM-1HP, 2FS72M-1HP, S272, S46-1HP, S45WB, S460D, BG272, DCV-6, DCV-8	1
5	HHC5037016	3/8-16 X 1 HHCS GR5 Z	6
6	SLW2037	3/8 SPLIT L/W Z	6
7	560-053	6" DIA DRIVE PULLEY (NEW STYLE) FOR S272 AND BG260	1
8	049-019	SPINDLE PULLEY BUSHING FOR S460W, S6MW, S612 & BG272	1
9	048-003	ADJUSTING BAR FOR S272	1
10	HHC5031016	5/16-18 X 1 HHCS GR5 Z	1
11	SLW2031	5/16 SPLIT L/W Z	1
12	563-028	PLATEN FOR S272 SANDERS (NEW STYLE)	1
13	936-013	WHEEL, CONTACT 1-1/2" DIA (2" WIDE) FOR S272 SANDERS	1
14	936-012	WHEEL, CONTACT 3" DIA (2" WIDE) FOR S272 SANDERS	1
15	FJNZ038	3/8-24 F H JAM NUT	2
16	829-034	CAST IRON WORK TABLE FOR S272, S460, AND BG448	1
17	HHC5037032	3/8-16 X 2 HHCS GR5 Z	1
18	UFW2037	3/8 USS F/W Z	3
19	002-009	ARM, TRACKING FOR S272	1
20	562-013	TRACKING ARM PIN FOR S272 AND BG272	1
21	641-016	RETAINING RING FOR S6, S460W, S612	2
22	053-004	S272 TRACKING BLOCK	1
23	936-003	NYLON IDLER PULLEY W BEARINGS FOR S272, BG272, 2FS72M, BG248	1
24	SSKA025006	1/4-20 X 3/8 SOC SET KNURL PT.	1
25	SSKA025004	1/4-20 X 1/4 SOC SET KNURL PT.	2
26	562-014	PIVOT PIN FOR S272 SANDERS	1
27	696-009	KNOB, TRACKING FOR S272 AND BG272 SANDERS	1
28	697-036	SPRING, FOR S272 TRACKING KNOB	1
29	455-001	TENSION HANDLE FOR S272 AND BG272 HANDLE	1
30	041-014	TENSION BRACKET FOR S272 AND BG272	1
31	BSCA025008	1/4-20 X 1/2 BSCHCS	4
32	SLW2025	1/4 SPLIT L/W Z	4
33	342-015	BELT GUARD FOR S272 SANDERS	1
34	SHCA025016	1/4-20 X 1 SHCS	1



PROPRIETARY AND CONFIDENTIAL. THIS DRAWING IS THE PROPERTY OF KALAMAZOO. IT IS TO BE USED ONLY FOR THE PURPOSES SPECIFIED HEREIN. NO PART OF THIS DRAWING IS TO BE REPRODUCED OR TRANSMITTED IN ANY FORM OR BY ANY MEANS, ELECTRONIC OR MECHANICAL, INCLUDING PHOTOCOPYING, RECORDING, OR BY ANY INFORMATION STORAGE AND RETRIEVAL SYSTEM, WITHOUT THE WRITTEN PERMISSION OF KALAMAZOO. UNLESS OTHERWISE SPECIFIED: DIMENSIONS ARE IN INCHES; TOLERANCES: FRACTIONAL: ANGULAR: HATCH: FINISH: SURFACE: UNLESS OTHERWISE SPECIFIED, DIMENSIONS ARE TO BE DRILLED AND TAPPED. HOLE LOCATIONS DETAILED ARE APPROXIMATE.

DATE	BY	CHKD	APP'D

TITLE: 2" X 72" BELT GRINDER/BENCH MODEL  
 SIZE: DWG. NO. E S272  
 SCALE: 1:2 WEIGHT: SHEET 1 OF 1